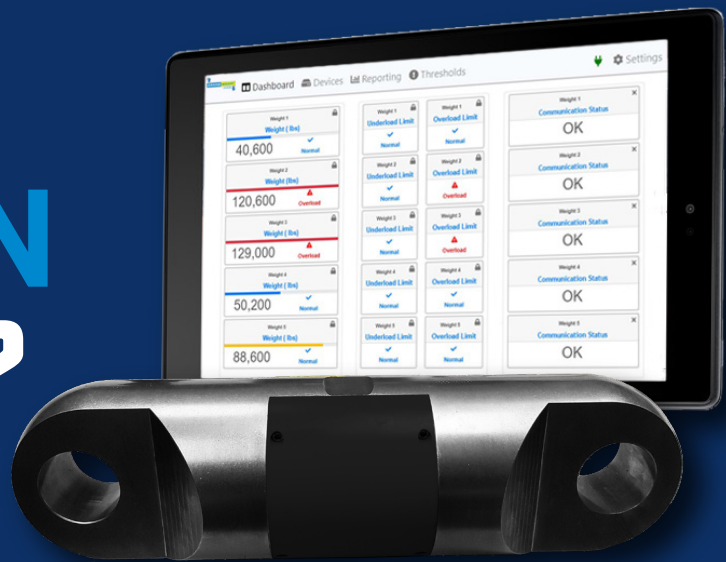




THE WINCHSMART SYSTEM by Cranesmart

WHAT'S ON THE LINE?



**PROTECT YOUR CREW.
PROTECT YOUR EQUIPMENT.**

STEEP TERRAIN MEANS CABLE STRAIN.

Steep pipeline work is challenging enough when everything is going smoothly. Breaking tow line cables between machines can be dangerous and costly. Protect your crew and equipment while getting the job done more efficiently with Cranesmart's new Winchsmart System.

PROTECT YOUR CREW

A simple user interface and load warning alarms help ensure operators are aware of real-time conditions at every moment.

QUICK EASY INSTALLATION

Simple design allows users to install the Winchsmart System load cell in seconds, no technician required.

SAVE TIME AND MONEY

Accurate display and logging of load conditions saves on machine and cable stress, which saves significant time and money.

ACCURATE AND FIELD-READY

All systems are factory calibrated to certification-level accuracy.



PREVENT MACHINE DAMAGE

Knowing exactly how much load is on the line at all times allows for proper damage prevention and preventative maintenance of machinery and cable.

BUILT TOUGH

Our systems are designed to work in all environmental extremes and have a robust temperature range of: -40°C to +60°C (-40°F to +140°F).

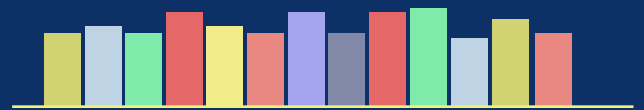
WARNING STATION

Loud horn and beacon alert when any load exceeds its maximum.

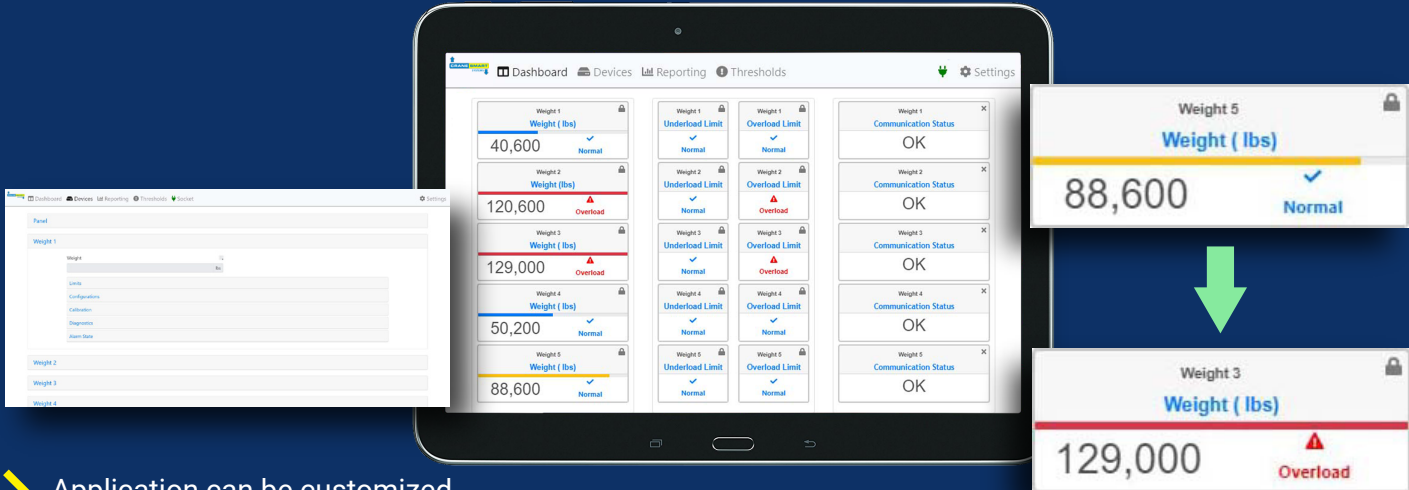
SERVICE

At Cranesmart, we enjoy taking care of our customers. You can count on our friendly, knowledgeable, and experienced staff to provide all information and equipment required, hassle free. All Cranesmart systems are backed by guaranteed service for a minimum of 10 years, and free batteries during the life of the system.

JOBSITE FOREMAN APP



- The Winchsmart local area WiFi allows supervisors to view operation data effectively - monitor the load status of multiple machines at once, while recording values for analysis.
- Provides complete status at a glance, tailored to any set of specific needs.

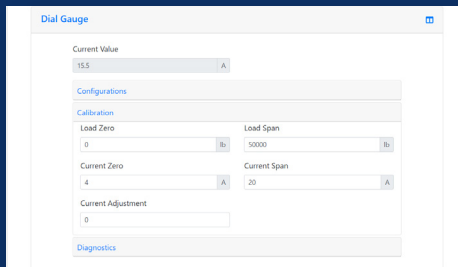


- Application can be customized by the user.
- All alarms are clearly displayed and logged, indicated by type, time, date and status.

DYNAMIC LOG ANALYSIS



- Loads can be viewed after the fact to help you predict your equipment needs in similar situations.



- The Winchsmart System has an HTML interface that allows for viewing from any phone, tablet or laptop and can be accessed via a local WiFi connection. Internet connection is not required.
- The system can be accessed via cell phone network if a connection is available. Look at the loads live from the office.

Distributed by:

PipeLine
Machinery



To order contact PLM Parts:



713-580-8417



parts@plmcat.com



USA:

+1-713-939-0007

CANADA:

+1-780-377-0336

CHINA:

+1-86-10-8527-6106

NETHERLANDS:

+1-31-70-353-8279

AUSTRALIA:

+1-61-423-394-730



www.plmcat.com

MEETING OR EXCEEDING COMPLIANCE REQUIREMENTS

Cranesmart safety equipment is approved and meets and/or exceeds the guidelines set forth by the following regulatory bodies:

