

D8

TRACK-TYPE TRACTOR



Net Power (1,900 rpm)

ISO 9249/SAE J1349

264 kW (354 hp)

ISO 9249 (DIN)

359 mhp

Operating Weight

Standard

40 233 kg (88,698 lb)

LGP

38 513 kg (84,906 lb)

Cat® C15 engine meets U.S. EPA Tier 4 Final/EU Stage V/Korea Stage V emission standards.



THE CAT D8 is the right choice when your business demands a step up in performance. A Caterpillar designed, fully automatic 4-speed transmission is at the heart of performance improvements that take you to a whole new level of productivity and efficiency.

THE CAT[®] D8

PRODUCTIVITY THAT PAYS



NEW NAME, SAME WORLD-CLASS PERFORMANCE

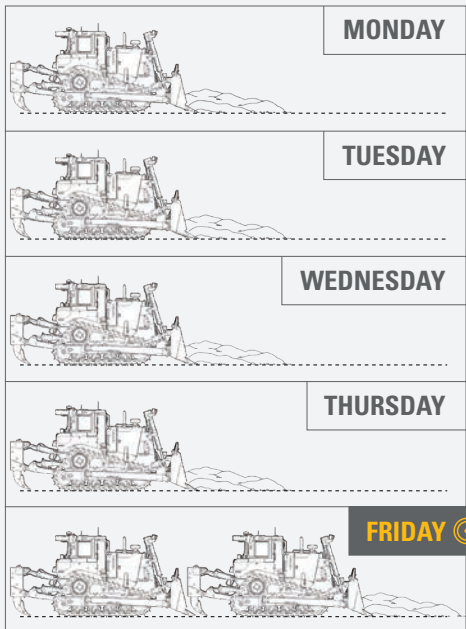
The update from D8T to D8 is part of an effort to make all Cat dozer model names simpler. The Cat dozer range has been renamed from smallest to largest – D1 to D11 – with one model per size class and no more series letter modifiers like “N,” “K” or “T.” While the name may be a little different, the D8 continues to deliver the productivity, efficiency and horsepower you need to help you make the most of your equipment investment.



MOVE MORE, DON'T BURN MORE.

MOVE UP TO 18% MORE MATERIAL PER HOUR.*

**THAT'S ALMOST LIKE HAVING AN
EXTRA MACHINE ON THE JOB!**



8-HOUR WORK DAY × 18% EFFICIENCY IMPROVEMENT = AN EXTRA 1.44 HOURS WORTH OF WORK COMPLETED EACH DAY
1.44 HOURS/DAY × 5 DAYS A WEEK = AN ADDITIONAL **7.2 HOURS** OF WORK USING ABOUT THE SAME AMOUNT OF FUEL

*COMPARED TO PREVIOUS MODEL

MOVE UP TO 18% MORE MATERIAL PER HOUR

Fully automatic transmission, added power and steering performance team up for a new level of productivity. Larger blade capacity gets the job done in fewer passes.

BURN ZERO ADDITIONAL FUEL

Move more material without burning more fuel in most applications. Use up to 11% less fuel in lighter applications.

MOVE MORE. SPEND LESS.

Grade technologies help you work more precisely for faster results, less rework. Blade and undercarriage options help you take on the harshest conditions at a lower overall cost.

Comparisons to previous model D8T Build 20 (SN Prefix FMC).



FULLY AUTOMATIC

Caterpillar designed, fully automatic 4-speed transmission continuously adjusts for maximum performance and efficiency – no need for operator to upshift/downshift.



FEWER PASSES

Largest Semi-Universal (SU) blade in the size class gives you 19% more capacity. Increase blade payload by up to 35%, especially in hard ground or rock, with optional FirstCut™ Cutting Edges.



CLASS-LEADING STEERING

Move material more easily while turning with 10% more steering torque. Automatic transmission, differential steering and dedicated steering and implement pumps combine to provide best-in-class steering performance under load.



MORE POWER TO WORK

Take advantage of up to 13% more drawbar horsepower to the ground. Auto shift works up and down the entire working range, so power and fuel consumption are optimized throughout the dozing cycle.

Comparisons to previous model D8T Build 20 (SN Prefix FMC)

TECHNOLOGY CHOICES

HELP YOU STAY AHEAD

These days, you need every edge you can get to win the bid and get the job done on time and on spec. Caterpillar offers you a choice of technology options to help you stay in front of the competition.

GRADE FOR DOZERS

Cat Grade technologies help operators of varying experience levels hit target grade faster and more accurately. Finish jobs in fewer passes and with less operator effort, saving you time and helping you increase profit.

All Cat Grade systems are compatible with radios and base stations from Trimble, Topcon and Leica.

CAT® TECHNOLOGY IS LIKE HAVING A **COACH IN THE CAB**

PLAY YOUR BEST

Optimal efficiency, fewer operator inputs

KNOW THE SCORE

Real-time Feedback

NO FOUL

Save rework, time, materials



BETTER GRADES

LESS EFFORT



FIRST PASS TO FINISH GRADE

Optional Cat Grade with 3D automates blade movements in fine grading and production dozing applications. Reduces operator inputs by as much as 80%. Antennas mounted on top of the cab eliminate blade masts and cables. Decreases the need for grade checkers and staking for greater safety and lower labor costs.

SIMPLE: NO GPS NEEDED

Cat Grade with Slope Assist™ automatically maintains blade position without a GPS signal. Ideal for jobs like building pads, creating simple design plans on-the-go, or working where GPS is unavailable. (Single Tilt only.)

READY WHEN YOU ARE

With Attachment Ready Option (ARO), your dozer comes from the factory ready for simple installation of a grade control system.

Already invested in a grade infrastructure? You can install grade systems from Trimble, Topcon and Leica onto the machine.

HELPING HANDS

Automate repetitive tasks to help reduce operator fatigue.

Auto Blade Assist lets you preset blade pitch positions for the load, carry and spread portions of the cycle.

AutoCarry automates blade lift for more consistent blade loads. Helps reduce track slip. Works seamlessly with Grade with 3D.

Automatic Ripper Control with rip-to-depth feature that automatically adjusts engine speed and ripper depth to reduce track slip.

EQUIPMENT MANAGEMENT

TAKES THE GUESSWORK OUT OF MANAGING YOUR EQUIPMENT

Cat Equipment Management telematics technology helps take the complexity out of managing your jobsites by gathering data generated by your equipment, materials and people and serving it up to you in customizable formats.

CAT PRODUCT LINK™

Product Link™ collects data automatically and accurately from your assets – any type and any brand. Information such as location, hours, fuel usage, productivity, idle time, maintenance alerts, diagnostic codes, and machine health can be viewed online through web and mobile applications.



VISIONLINK®

Access information anytime, anywhere with VisionLink® – and use it to make informed decisions that boost productivity, lower costs, simplify maintenance, and improve safety and security on your job site. With different subscription level options, your Cat dealer can help you configure exactly what you need to connect your fleet and manage your business, without paying for extras you don't want. Subscriptions are available with cellular or satellite reporting or both.



COMMAND FOR DOZING

When dozers work in hazardous mining and earthmoving applications, remote control dozing option helps improve safety and efficiency. Operator controls the machine using a line-of-sight console or a remote operator station. Deep integration with machine systems enables smooth, precise control for maximum efficiency and productivity.



TOUGH ON THE JOB

EASY ON OPERATORS

MORE PRODUCTIVITY LESS EFFORT

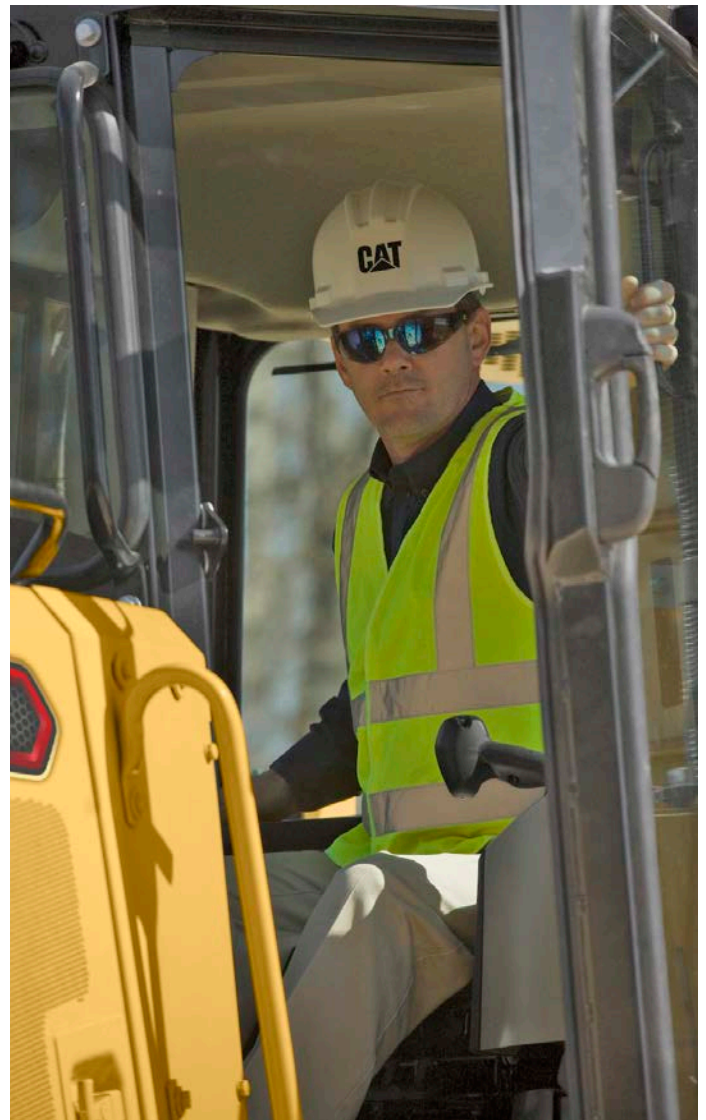
Get optimal performance and fuel efficiency with less operator effort. Just set the desired ground speed and the transmission optimizes the dozer based on the demands of the job. No need for operator to upshift/downshift.

SMOOTH RIDE

An added gear between first and second and seamless lock-up clutch engagement ensure smooth shifting.

CONTROL CLOSE AT HAND

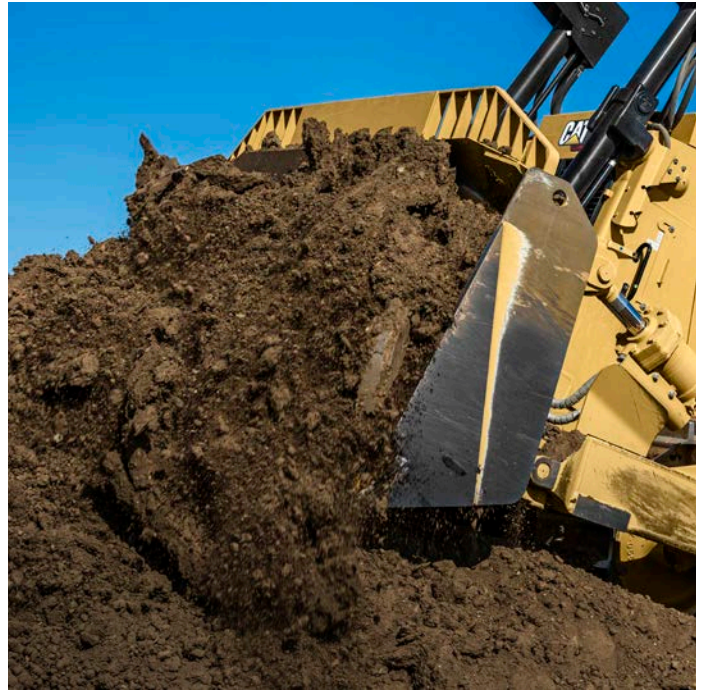
All speed and turning input is packaged in a single hand control for easy operation. A detented thumbwheel puts on-the-fly ground speed changes at your fingertips – one bump for small increments, roll all the way forward/back for large increments.



Comparisons to previous model D8T Build 20 (SN Prefix FMC)

BIGGER PAYLOAD

FASTER PAYDAY



MORE CAPACITY. FEWER PASSES.

Largest Semi-Universal blade in the size class, now offering 19% more capacity so you make fewer passes. Or choose Universal, Angle or Specialty blades to best suit your applications.

DURABILITY OUT FRONT

Blades are made from high tensile strength steel, with strong box-section design, heavy moldboard construction and hardened bolt-on cutting edges/end bits.

Comparisons to previous model D8T Build 20 (SN Prefix FMC)

BETTER BALANCE. BETTER PERFORMANCE.

Tag-link design mounts blade closer to the machine for stability, balance, blade penetration and maneuverability. Optional Dual Tilt positions the blade forward for better penetration, then tilts back for carrying capacity and load control.

LOAD FASTER IN HARD GROUND

Patented Cat FirstCut Cutting Edges for Semi-Universal blades load faster and increase blade payload by up to 35%.* Designed for better penetration in hard/frozen ground and moderate rock, ripping may even be reduced in some situations.

- + Digs deeper to aid blade control, load retention, traction. Reduces track slip.
- + Equal wear life/lifecycle cost* – no mid-life edge flip or end bit replacement required, reducing maintenance time. Built-in wear indicators, easy-to-install, interchangeable with traditional edges.
- + Versatility – on-plane cutting system allows finish grading.

*Compared to standard cutting edges.

ON TRACK TO LOWER COSTS

ELEVATE YOUR PERFORMANCE



ELEVATED SPROCKET

Caterpillar exclusive elevated sprocket gives you an added edge in machine balance, durability and service ease. Reduces shock loads to drive train components. Fully suspended undercarriage provides more ground contact in tough terrain.

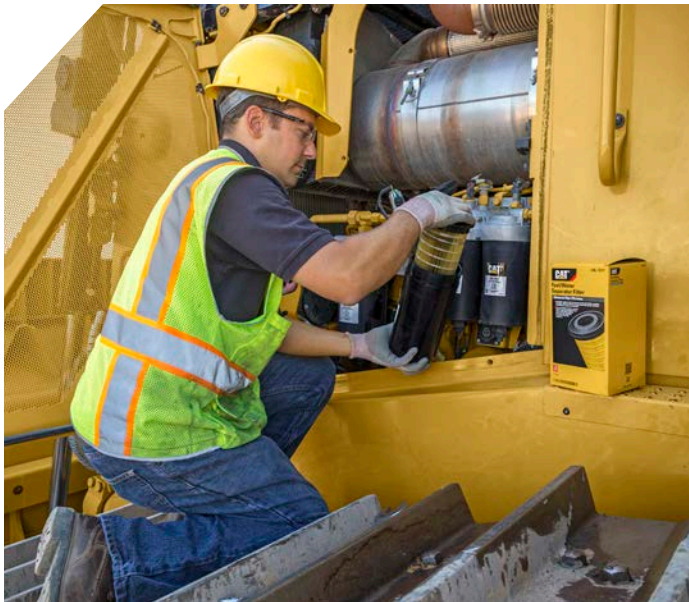
HEAVY DUTY DURABILITY

Standard Heavy Duty undercarriage with the exclusive Cat Positive Pin Retention system is well-suited to aggressive work like land clearing, side-slopes, or working in rocky or uneven terrain.

MORE WEAR LIFE

Optional Heavy Duty Extended Life Undercarriage – Cat HDXL with DuraLink™ – features heavier bushings for up to 25% more wear life, especially in high abrasion conditions. Patented crowned DuraLink is hardened for longer life and reduced scalloping, which improves ride after 50% link wear.

Comparisons to Positive Pin Retention undercarriage.



BECAUSE UPTIME COUNTS

MAINTENANCE MADE EASY

Spend more time on the job and less time and money on maintenance.

SAVE TIME, SAVE MONEY

Grouped service points and ground-level service center for more convenient regular maintenance. Exclusive Cat hydraulic and power train oil filters offer extended service intervals to save you time and money.

LONGER SERVICE INTERVAL

Larger one-piece oil pan doubles engine oil service interval to 500 hours, saving you time and parts cost.

RUN CLEANER

High quality cartridge fuel filters are purpose-built to help keep your fuel system clean and extend injector life. An integrated drain valve makes service easier, and the non-metallic design helps reduce waste.

LOWER LIFETIME COST

Major structures and components are built to be rebuilt, providing lower lifetime operating costs.

MORE TIME SAVERS

Added features to save time and maintenance expense.

Programmable automatic reversing fan clears debris from the radiator package. Now standard to give you more value.

Optional **Powered Bottom Guards** reduce downtime for maintenance and enhance safety. Simply remove bolts and use remote switch to open from the center for quick clean-out, or from one side for full access.

Electronic fluid level verification at startup for coolant, power train and engine oil means you can save time, as well as reduce trips up and down from the cab to inspect compartments.

Comparisons to previous model D8T Build 20 (SN Prefix FMC)



GREATER VISIBILITY

A rear vision camera and cylinder mounted mirrors are available to enhance visibility around the machine.



EASY ON AND OFF

Convenient steps, handles and guardrail help you get on and off the tractor with greater ease. Access lighting can be turned on from a ground-level switch.



OPERATOR PROTECTION

Standard Operator Presence detection system allows the machine to idle when the operator is not seated, but locks out the power train and front implements to avoid unintentional movement.



SAFETY REMINDER

Seat belt indicator reminds the operator to buckle up with a light/alarm, and registers a fault code through Product Link if the operator fails to fasten the seat belt.

WASTE HANDLER

PURPOSE-BUILT FOR PERFORMANCE

Build or close cells, push trash or spread cover – the D8 Waste Handler is designed and built from the frame up to take on the challenges of landfill work.



GUARD AGAINST DEBRIS

Specialized guarding, striker bars and seals help protect against impact and airborne debris. Bottom and Final Drive guarding helps prevent damage from wrapping debris.

MAKE SHORT WORK OF CLEANOUT

Faster cleanout and enhanced safety with optional Powered Bottom Guards. High debris cooling system with automatic reversing fan.

CUSTOMIZED COMPONENTS

Insulated Clean Emissions Module and thermal shields provide the highest level of protection. Specialized air handling features help deliver cleaner air to the machine and to the cab.

READY TO WORK

Landfill blades and center-hole track shoes help optimize your waste handler for the job. Lights are mounted up and away from main debris area for protection, while still shining plenty of light on the work area.

D8 STOCKPILE ARRANGEMENT

Specialized guarding and seals help protect the machine from damage and debris build-up. Specialized track shoes and woodchip and coal blades help optimize your machine.

- + High debris cooling system with automatic reversing fan for easy cleanout.
- + Thermal protection with insulated clean emissions module and shields.
- + Screened precleaner and roof-mounted filter help protect against dust and debris.

TECHNICAL SPECIFICATIONS

See cat.com for complete specifications.

ENGINE		
Engine Model	Cat® C15	
Emissions	Tier 4 Final/Stage V/ Korea Stage V	
Net Power (1,900 rpm)		
ISO 9249/SAE J1349	264 kW	354 hp
ISO 9249 (DIN)	359 mhp	
Engine Power (1,600 rpm)		
ISO 14396	294 kW	394 hp
ISO 14396 (DIN)	400 mhp	
Displacement	15.2 L	928 in ³
<ul style="list-style-type: none"> • Net power available at the flywheel when the engine is equipped with fan, air cleaner, aftertreatment and alternator with engine speed at 1,900 rpm. • Advertised power is tested per the specified standard in effect at the time of manufacture. • Cat diesel engines are required to use ULSD (ultra-low sulfur diesel fuel with 15 ppm of sulfur or less) or ULSD blended with the following lower-carbon intensity fuels up to: <ul style="list-style-type: none"> • 20% biodiesel FAME (fatty acid methyl ester)* • 100% renewable diesel, HVO (hydrotreated vegetable oil) and GTL (gas-to-liquid) fuels <p>Refer to guidelines for successful application. Please consult your Cat dealer or “Caterpillar Machine Fluids Recommendations” (SEBU6250) for details.</p> <p>* Engines with no aftertreatment devices can use higher blends, up to 100% biodiesel (for use of blends higher than 20% biodiesel, consult your Cat dealer).</p>		

OPERATING WEIGHT		
Standard (single shank ripper)	40 233 kg	88,698 lb
LGP (drawbar)	38 513 kg	84,906 lb
Waste Handler	40 010 kg	88,206 lb
LGP Waste Handler	42 489 kg	93,672 lb

SERVICE REFILL CAPACITIES		
Fuel Tank	627 L	165 gal
Diesel Exhaust Fluid Tank	24 L	6.3 gal
Cooling System	86 L	22.7 gal
Engine Crankcase*	38 L	10 gal
Power Train	155 L	41 gal
Hydraulic Tank	75 L	19.8 gal
*With oil filter.		

AIR CONDITIONING SYSTEM
The air conditioning system on this machine contains the fluorinated greenhouse gas refrigerant R134a (Global Warming Potential = 1430). The system contains 2.5 kg of refrigerant which has a CO ₂ equivalent of 3.575 metric tonnes.

D8 BLADE	CAPACITY	WIDTH OVER ENDBITS	HEIGHT
Semi-Universal (SU)*	10.3 m ³ 13.4 yd ³	4042 mm 13.3 ft	1747 mm 5.7 ft
SU with FirstCut™ Cutting Edges	10.3 m ³ 13.4 yd ³	3962 mm 13.0 ft	1747 mm 5.7 ft
Universal with Rock Guard, Wear Plate	11.8 m ³ 15.4 yd ³	4265 mm 14.0 ft	2012 mm 6.6 ft
Angle Blade	5.2 m ³ 6.8 yd ³	5043 mm 16.5 ft	1177 mm 3.9 ft
LGP SU Landfill	22.2 m ³ 29.0 yd ³	4543 mm 14.9 ft	2454 mm 8.0 ft

*Also with rock guard/wear plate or push plate.

• Additional blades available. Please consult your Cat dealer for details.

DIMENSIONS	STANDARD	NON-SUSPENDED	LGP
Width of Tractor (without trunnions/standard shoe width)	2693 mm 106.0 in	2693 mm 106.0 in	3302 mm 130.0 in
Machine Height to ROPS** (to top of railing)	3566 mm 140.4 in	3575 mm 140.7 in	3566 mm 140.4 in
Length of Track on Ground	3206 mm 126.2 in	3258 mm 128.3 in	3206 mm 126.2 in
Length of Basic Tractor (tag link trunnion to tip of rear grouser)*	4647 mm 183.0 in	4647 mm 183.0 in	4647 mm 183.0 in
Ground Pressure	89.6 kPa 13.0 psi	89.6 kPa 13.0 psi	53.3 kPa 7.7 psi
Ground Clearance	613 mm 24.1 in	606 mm 23.8 in	613 mm 24.1 in

*Add the following measurements for attachments: Ripper (single shank) 1519 mm/59.8 in; Ripper (multi-shank) 1613 mm/63.5 in; Drawbar 406 mm/16.0 in; SU Blade 1844 mm/72.6 in; U Blade 2241 mm/88.2 in; A Blade (not angled) 2027 mm/79.8 in; A Blade (angled 25 degrees) 3068 mm/120.8 in.

**When Cat Grade with 3D antennas are installed, overall machine height increases by approximately 82 mm/3.2 in.

STANDARD & OPTIONAL EQUIPMENT

Standard and optional equipment may vary. Consult your Cat dealer for details.

POWER TRAIN	STANDARD	OPTIONAL
Cat C15 engine – meets U.S. EPA Tier 4 Final/ Korea Stage V emission standards	•	
Cat C15 engine – meets EU Stage V emission standards		•
Extreme Service Brakes		•
Ecology drains – power train		•
Engine thermal shield		•
Suction fan, auto reversing	•	
Fully automatic transmission	•	
High performance single plane cooling system	•	
High speed oil change system		•
High debris radiator, 6.35 fins per inch	•	
Torque divider with lock-up clutch	•	
CAT TECHNOLOGY	STANDARD	OPTIONAL
Attachment Ready Option (ARO)		•
AutoCarry/AutoRip, single tilt or dual tilt		•
Cat Grade with 3D		•
Cat Grade with Slope Assist™		•
Slope Indicate	•	
Compatibility with radios and base stations from Trimble, Topcon and Leica	•	
Capability to install 3D grade systems from Trimble, Topcon and Leica	•	
Command for Dozing ready		•
Product Link™ – cellular or dual mode		•
OPERATOR ENVIRONMENT	STANDARD	OPTIONAL
Access/egress lighting with shutdown timer	•	
Adjustable armrests	•	
Radio, AM/FM, Bluetooth®	•	
Air suspension cloth seat	•	
Cloth seat – heated or heated/ventilated		•
Touchscreen operator interface	•	
Visibility arrangement – mirrors or single camera		•

UNDERCARRIAGE	STANDARD	OPTIONAL
Gauge arrangements – Standard or LGP	•	
Positive Pin Retention (PPR) undercarriage	•	
610 mm (24 in) PPR moderate service shoes*	•	
Heavy Duty Extended Life (HDXL) undercarriage		•
HYDRAULICS	STANDARD	OPTIONAL
Hydraulics, electronically controlled, load-sensing	•	
Hydraulics, independent steering and work tool pumps	•	
ELECTRICAL	STANDARD	OPTIONAL
Converter, 24V to 12V	•	
Ground-level service center with hour meter	•	
Lights – premium light package		•
Lights – six-light package	•	
PUSH ARMS	STANDARD	OPTIONAL
Single tilt	•	
Dual tilt		•
GUARDS	STANDARD	OPTIONAL
Hinged bottom guards	•	
Powered bottom guards		•
Fan debris guard		•
Fast fuel guard		•
Fuel tank guard		•
Rear screen		•
Sweeps group		•
REAR ATTACHMENTS	STANDARD	OPTIONAL
Ripper		•
Rear counterweight		•
Rigid drawbar		•
Winch		•

Not all features are available in all regions. Please check with your local Cat dealer for specific offering availability in your area.

For additional information, refer to the Technical Specifications brochure available at www.cat.com or your Cat dealer.

For more complete information on Cat products, dealer services and industry solutions, visit us on the web at www.cat.com

© 2023 Caterpillar. All Rights Reserved.

VisionLink is a trademark of Caterpillar Inc., registered in the United States and in other countries.

Materials and specifications are subject to change without notice. Featured machines in photos may include additional equipment. See your Cat dealer for available options.

CAT, CATERPILLAR, LET'S DO THE WORK, their respective logos, DuraLink, Product Link, Slope Assist, FirstCut, "Caterpillar Corporate Yellow," the "Power Edge" and Cat "Modern Hex" trade dress as well as corporate and product identity used herein, are trademarks of Caterpillar and may not be used without permission.
www.cat.com www.caterpillar.com

AEXQ3308-02
Replaces AEXQ3308-01
Build Number: 21B
(Aus-NZ, Chile, Europe,
N Am, S Korea, Turkey)

