

374

HYDRAULIC EXCAVATOR



Engine Power (ISO 14396)
Operating Weight

362 kW (485 hp)
71 700 kg (158,100 lb)

Meets U.S. EPA Tier 4 Final, EU Stage V, and Japan 2014 emission standards.



NEXT GENERATION EXCAVATORS

Cat® next generation excavators offer you more choices than ever for your business.

- + MORE MODEL OPTIONS
- + MORE STANDARD TECHNOLOGIES
- + MORE PRICE POINTS

Cat next generation excavators give you new ways to get the most work done at the lowest cost so you can keep more of your hard-earned money.



CAT® 374

SETS THE STANDARD

High production. More durability. Less maintenance. The Cat 374 next generation excavator gives you those and so much more. With standard Cat Payload to show you how much material you are moving, up to two times more built-in structural durability to take on your most demanding work, and up to 20 percent less maintenance costs to keep more money in your pocket, the 374 next generation excavator is simply the best choice in its size class to make your business more profitable.



LOAD 33 TRUCKS IN



LOAD MORE TRUCKS

QUICKLY AND EFFICIENTLY

With 100 percent jobsite efficiency, you can expect to load up to 33 trucks per hour with the 374.* And you can validate your production in real time with Cat Payload, offered exclusively from Caterpillar as standard equipment.

A FINE PAIR

Caterpillar offers several trucks suitable for loading with the 374, and one of the best is the Cat 772. This truck has been handling the work of mines and quarries for over 40 years. The latest Cat G Series truck shown above is more efficient than ever, and several body options and the available Truck Production Management System make it even better.

* Mass front, 5.0 m³/6.5 yd³ bucket, 1.6 m³ material density, 100 percent fill factor, 100 percent jobsite efficiency.

INPUT		OUTPUT	
Model	374 NHT	Number of passes per truck	5
Bucket size (m ³)	5	Time to load 1 truck w/o exchange (sec)	100
Material density (metric ton/m ³)	1.6	Time to load 1 truck with exchange (sec)	110
Fill factor	100%	# Of trucks per hour	33
Truck payload (metric ton)	40	# Of trucks per shift (8 hours)	264
Cycle time/bucket (sec)	20		
Truck exchange time (sec)	10		

HYDROSTATIC SWING: YOUR COMPETITIVE ADVANTAGE



HYDROSTATIC SWING CIRCUIT FROM CATERPILLAR GIVES YOU TWO PRIMARY BENEFITS: HIGH PRODUCTIVITY WITH LOWER OPERATING COSTS.

The exclusive hydrostatic swing circuit has a dedicated bi-directional swing pump, swing motors, charge pump, and charge accumulator. The swing pump supplies oil to the swing motor; the charge pump and charge accumulator prevent cavitation (air bubbles) and overheating. The circuit enables regeneration of swing brake energy and independent management of cylinder oil flow, resulting in higher efficiency and smoother, more predictable performance when you multitask with the excavator.

DO JOBS FASTER

WITH CAT TECHNOLOGY



STANDARD TECHNOLOGIES:



CAT PAYLOAD

Cat Payload technology delivers precise load targets with on-the-go weighing, which helps prevent over/underloading and maximizes efficiency. Automated tracking helps you manage production and lower costs. You can even take payload data with you. The monitor's USB port lets you download results from one shift all the way up to 30 days of work so you can monitor progress without an internet connection or VisionLink® subscription.



CAT GRADE WITH 2D

Cat Grade with 2D helps operators reach grade faster. Operators can cut and fill to exact specifications without overcutting. No grade checkers are needed, which makes the work area safer.

AVAILABLE OPTIONAL UPGRADES

Cat Grade with Assist, Advanced 2D, and 3D increase accuracy, productivity, and your profit potential.

Grade with Advanced 2D offers in-field design capability through an additional high-resolution touchscreen monitor.

Cat Grade with 3D offers a choice of a single antenna global navigation satellite system (GNSS) for enhanced guidance or dual antenna GNSS for maximum grading efficiency.

All Cat Grade systems are compatible with radios and base stations from Trimble, Topcon, and Leica. Already invested in a grade infrastructure? You can install grade systems from Trimble, Topcon, and Leica onto the machine.

GET MUSCLE WHERE IT MATTERS

FOR LONGER SERVICE LIFE



NO MATTER HOW HARD THE WORK, THE 374 WILL CUT THROUGH AND DELIVER.

In fact, the boom, stick, and frame are up to two times stronger than those on the previous model – all to give you reliable performance for the life of your machine.

REINFORCED BOOM, STICK & FRAME

- + INCREASED BOOM TOP AND BOTTOM PLATE THICKNESS
- + REDESIGNED BOOM NOSE BRACKET AND BAFFLE PLATE
- + INCREASED STICK SIDE, BOTTOM, AND BRACKET PLATE THICKNESS
- + INCREASED BASE FRAME AND COUNTERWEIGHT MOUNTING PLATE THICKNESS

MORE REINFORCEMENTS

Cylinder rods are upgraded for enhanced strength and have additional wear rings to reduce oil leaks. The car body has increased baffle plate thickness for longer service life. Track link has increased thickness and larger bolt joints for better bolt retention. Track rollers have a larger shaft diameter to prevent bending and oil leaks and increase the 374's loading capacity, which means more reliable production for you.

HOW BAFFLE PLATES HELP YOU

Did you know baffle plates increase an excavator's strength-to-weight ratio? That's why Caterpillar incorporates the plates in high-stress areas like the boom, stick, and frame. More strength without adding significantly more weight means longer service life and faster, more efficient boom and stick response.

EXPECT UP TO 20% LOWER MAINTENANCE COSTS

WITH MORE UPTIME



NEXT GENERATION 374

6.5 OIL BARRELS

F SERIES

11 OIL BARRELS



NEXT GENERATION 374

104 FILTERS

F SERIES

180 FILTERS

SAVES YOU 20% IN MAINTENANCE

* OVER 12,000 SERVICE HOURS

The 374's extended and synchronized service intervals, along with reduced hydraulic oil capacity, mean you'll be able to spend more time working and up to 20 percent less in maintenance costs than the previous model.

The excavator is auto lube ready with built-in mounting points; an available auto lube retrofit kit provides additional hardware to mount a grease pump and line guards – all to make the job of lubing safer, cleaner, and trouble free.

KEY MAINTENANCE COST REDUCTIONS:

- + Fuel and engine oil filters accessible from the upper platform and synchronized to be changed at 1,000 hours.
- + Advanced air intake filter with double the dust holding capacity of the previous air intake filter.
- + Hydraulic oil filter with improved filtration and a 3,000 hour replacement interval – 50 percent longer than previous filter designs.
- + High-efficiency hydraulic fan with programmable automatic reverse function to keep cores free of debris.
- + S-O-SSM ports for quick extraction of fluid samples and more simplified maintenance.

MAKE MANAGING EQUIPMENT EASIER

Cat Equipment Management helps take the complexity out of overseeing your jobsites by gathering data generated by your equipment, materials, and people and serving it up to you in customizable formats.

PRODUCT LINK™

Product Link collects data automatically and accurately from your assets – any type and any brand. Information such as location, hours, fuel usage, productivity, idle time, maintenance alerts, diagnostic codes, and machine health can be viewed online through web and mobile applications.

VISIONLINK

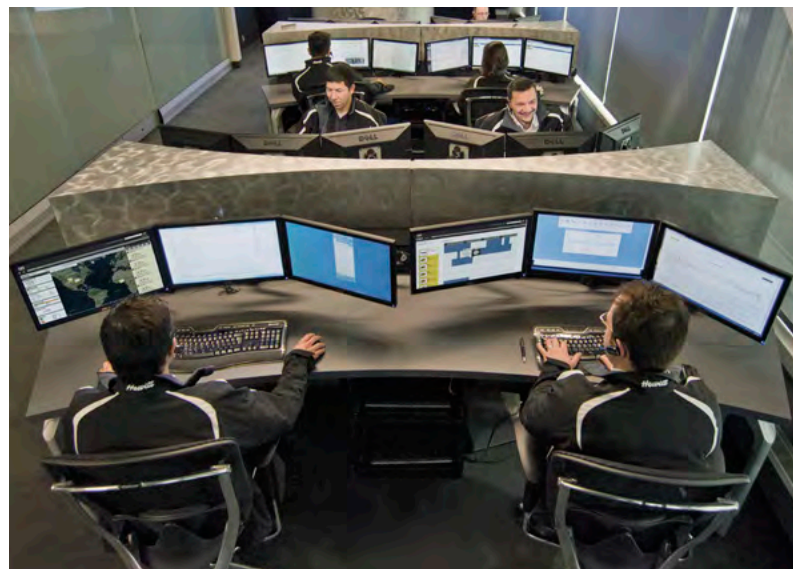
Access information anytime, anywhere with VisionLink – and use it to make informed decisions that boost productivity, lower costs, simplify maintenance, and improve safety and security on your jobsite. With different subscription level options, your Cat dealer can help you configure exactly what you need to connect your fleet and manage your business without paying for extras you don't want. Subscriptions are available with cellular or satellite reporting (or both).



Remote Services is a suite of technologies that improve your jobsite efficiency.

Remote troubleshoot allows your Cat dealer to perform diagnostic testing on your connected machine remotely, pinpointing potential issues while the machine is in operation. Remote troubleshoot ensures the technician arrives with the correct parts and tools the first time, eliminating additional trips to save you time and money.

Remote flash updates on-board software without a technician being present, potentially reducing update time by as much as 50 percent. You can initiate the update when convenient, increasing your overall operating efficiency.



STAY COMFORTABLE WITH THE STATE-OF-THE-ART CAB

Sites where excavators work are typically rugged and challenging. That's why it's important that the 374 cab protects the operator as much as possible from fatigue, stresses, sounds, and temperatures of the job.



SOUND-SUPPRESSED CAB

The cab is sound suppressed and sealed. All controls are located in front of the operator. Getting to critical information and settings is easy with the touchscreen monitor. Shortcut keys make it even easier and include two for entertainment and heating and air conditioning. There is also a shortcut key for apps and functions that you can set.

ALL-AROUND VISIBILITY

The windows give outstanding visibility to the work area. The polycarbonate roof hatch improves visibility above you. Dome and floor welcome lights automatically turn on when the door is opened. Rear and sideview cameras come standard, and a 360° Visibility feature that uses multiple cameras is also available to enhance jobsite safety.

ERGONOMIC SEAT

Comfort and efficiency of movement keep operators productive and alert all shift long. The standard seat is wide and adjustable for operators of virtually any size. The Deluxe cab package includes a heated air suspension seat; the Premium seat is both heated and cooled. The tip-up console makes getting in and out of the seat easier than ever.

CONNECTIVITY AND STORAGE

Convenience features include Bluetooth® integrated radio, USB ports for charging and phone connectivity, 12V DC outlets, and an AUX port. Cup and bottle holders are easy to reach, and storage spaces are located conveniently throughout the cab.





TOUCHSCREEN MONITOR

Most machine settings can be controlled through the high-resolution touchscreen monitor. It offers multiple languages and is easy to reach from the seat – no twisting or turning.



SMART MODE

Smart mode automatically adjusts engine and hydraulic power for the highest fuel efficiency – less power for tasks such as swinging and more power for digging. Operators can set and store their power mode preference using Operator ID; owners can lock in the mode they want their operators to use to help manage fuel consumption.



CUSTOMIZABLE JOYSTICKS

Joystick function can be customized through the monitor. Joystick pattern as well as response can be set to match operator preference.* All preferences are saved with the operator ID and restored at login. Moving the excavator is much easier with Cat Stick Steer. Simply push a button and use one hand to travel and turn instead of both hands or feet on levers or pedals. You can also add an auxiliary relay to power on or turn off a CB radio, beacon light, or other attachment so you don't have to take your hands off the joysticks.

*Not offered in all regions. Consult with your Cat dealer.



KEYLESS PUSH TO START

The 374 uses a keyless push-button engine start. This adds security for the machine by using Operator ID codes to limit and track machine access. Codes can be entered manually, via an optional Bluetooth key fob.



ENHANCE SAFETY

FOR YOU AND OTHERS

AVOID TRIPPING

Serrated steps, anti-skid plating, and handrails help ensure you avoid slips and trips – a major contributor to workplace injuries.

AVOID TIPPING

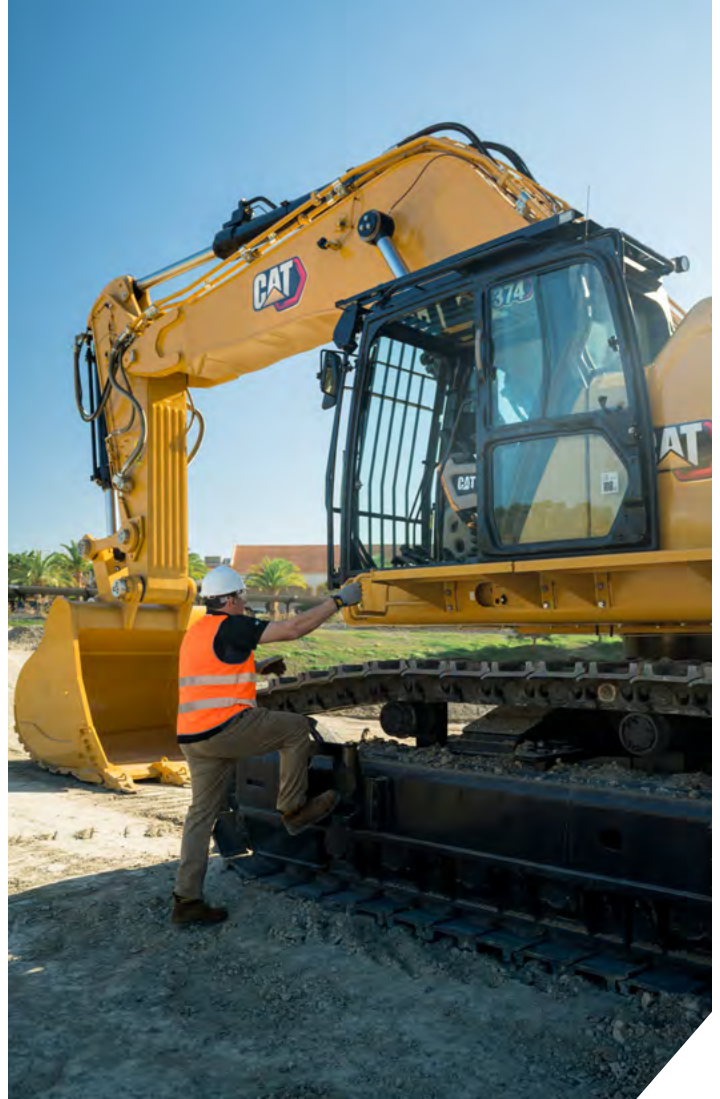
Standard Lift Assist quickly calculates the actual load you are lifting and compares it to the rated load the excavator is capable of handling. Visual and auditory alerts tell you if you are within safe working range or need to take immediate action to avoid tipping.

ILLUMINATE THE MACHINE AND JOBSITE

Add optional inspection lighting to illuminate the engine, pump, battery, and cooling compartments for easier service work. See all around the machine with the premium 360° lighting package. The 1800 lumen lights on the chassis, cab, boom, sides, and rear illuminate the jobsite for operators and ground personnel.

OPERATE OUTSIDE THE CAB

Enhance jobsite safety by adding Cat Command to your fleet. The remote control system comes with everything you need to operate outside of the cab. Command console lets you operate at a safe distance on the job. Command station lets you work from virtually anywhere.





PROTECTION IN
ALL DIRECTIONS



E-WALL SWING



E-WALL FORWARD



E-WALL CAB PROTECTION



E-WALL CEILING



E-WALL FLOOR

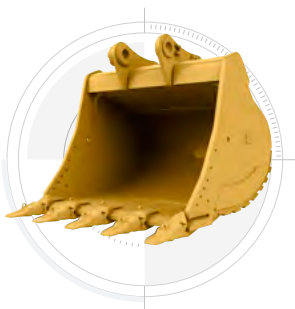
STANDARD 2D E-FENCE TECHNOLOGY

Whether you are using a bucket, hammer, grapple, or clamshell, standard 2D E-fence automatically stops excavator motion using boundaries you set in the monitor for the entire working envelope – above, below, sides, and front. E-fence protects equipment from damage and reduces fines related to zoning or underground utility damage. Automatic boundaries even help prevent operator fatigue by reducing overswinging and overdigging.

INCREASE YOUR PRODUCTIVITY AND PROFIT WITH CAT ATTACHMENTS

You can easily expand the performance of your machine by utilizing any of the variety of Cat attachments. Each Cat attachment is designed to fit the weight and horsepower of Cat excavators for improved performance, safety, and stability.

BUCKETS



HYDRAULIC HAMMERS



PREVENT HAMMER WEAR AND TEAR

Protect your hammer from overworking. Auto hammer stop warns you after 15 seconds of continuous firing and then automatically shuts it off after 30 seconds – all to prevent wear and tear on the attachment and excavator.

QUICK COUPLERS



MULTI-PROCESSORS



SHEARS



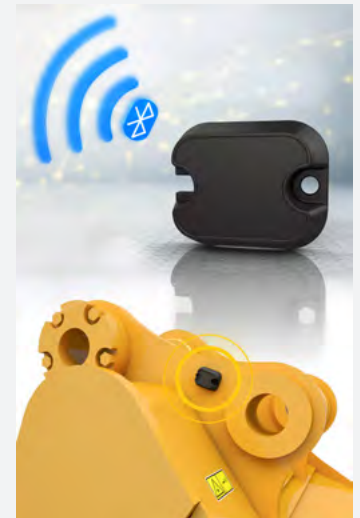
MORE THAN MACHINES

When you buy Cat equipment, you're getting so much more than the machine. You're also getting the support of a best-in-class dealer network backed by a range of flexible solutions, technology, tools, and more. It's all about support that's built around your success.

- Customer Value Agreements (CVA)
- Cost-saving service and repair options
- Quality parts and precision components
- Financing solutions
- Rental and used equipment

ATTACHMENT TRACKING MADE EASY

The Cat PL161 Attachment Locator is a Bluetooth device that makes finding your attachments and other gear quick and easy. The excavator's on-board Bluetooth reader or the Cat app on your phone will locate the device automatically.



Save more time and energy with the available work tool recognition feature. A simple shake of the attached tool confirms its identity; it also ensures all the attachment settings are correct so you can get to work quickly and efficiently.

TECHNICAL SPECIFICATIONS

See cat.com for complete specifications.

ENGINE		
Engine Model	Cat C15	
Engine Power – ISO 9249	361 kW	484 hp
Engine Power – ISO 14396	362 kW	485 hp
Bore	137 mm	5.39 in
Stroke	171 mm	6.73 in
Displacement	15.2 L	928 in ³

ISO 9249 is net power available at the flywheel when the engine is equipped with fan, air cleaner, muffler, and alternator with engine speed at 1,700 rpm.

HYDRAULIC SYSTEM		
Main System – Maximum Flow – Implement	896 L/min (x2 pumps)	237 gal/min (x2 pumps)
Maximum Pressure – Equipment – Implement	37 000 kPa	5,366 psi
Maximum Pressure – Equipment – Lift Mode	38 000 kPa	5,511 psi
Maximum Pressure – Travel	35 000 kPa	5,076 psi
Maximum Pressure – Swing	35 000 kPa	5,076 psi

SWING MECHANISM		
Swing Speed	6.5 rpm	
Maximum Swing Torque	298 kN·m	220,000 lbf·ft

WEIGHTS		
Operating Weight	71 700 kg	158,100 lb
• Reach boom, R3.6 (11'10") stick, SD 3.0 m ³ (3.92 yd ³) bucket, 650 mm (26") double grouser shoes, 11.2 mt (24,700 lb) counterweight.		

SERVICE REFILL CAPACITIES		
Fuel Tank	920 L	243 gal
Cooling System	71 L	19 gal
Engine Oil (with filter)	62 L	16 gal
Swing Drive	20 L	5 gal
Final Drive (each)	32 L	9 gal
Hydraulic System (including tank)	620 L	164 gal
Hydraulic Tank (including suction pipe)	326 L	86 gal
DEF Tank	80 L	21 gal

DIMENSIONS		
Boom	Reach 7.8 m (25'7")	
Stick	Reach 3.6 m (11'10")	
Bucket	SD 3.3 m ³ (4.32 yd ³)	
Shipping Height (top of cab)	3559 mm	11'8"
Handrail Height	3982 mm	13'0"
Shipping Length (boom, stick, bucket installed)	13 652 mm	44'9"
Tail Swing Radius	4171 mm	13'8"
Counterweight Clearance	1494 mm	4'10"
Ground Clearance	782 mm	2'6"
Track Length	5873 mm	19'3"
Track Length to Center of Rollers	4705 mm	15'5"
Track Gauge – Extended	3410 mm	11'2"
Track Gauge – Retracted	2750 mm	9'0"
Transport Width – Extended – 650 mm (26") Shoes – Without Steps	4060 mm	13'3"
Transport Width – Retracted – 650 mm (26") Shoes – Without Steps	3400 mm	11'1"

WORKING RANGES AND FORCES		
Boom	Reach 7.8 m (25'7")	
Stick	Reach 3.6 m (11'10")	
Bucket	SD 3.3 m ³ (4.32 yd ³)	
Maximum Digging Depth	8570 mm	28'1"
Maximum Reach at Ground Level	13 160 mm	43'2"
Maximum Cutting Height	12 550 mm	41'2"
Maximum Loading Height	8430 mm	27'7"
Minimum Loading Height	3310 mm	10'10"
Maximum Depth Cut for 2440 mm (8'0") Level Bottom	8440 mm	27'8"
Maximum Vertical Wall Digging Depth	6910 mm	22'8"
Bucket Digging Force (ISO)	358 kN	80,550 lbf
Stick Digging Force (ISO)	295 kN	66,390 lbf

AIR CONDITIONING SYSTEM		
• The air conditioning system on this machine contains the fluorinated greenhouse gas refrigerant R134a (Global Warming Potential = 1430). The system contains 1.00 kg of refrigerant which has a CO ₂ equivalent of 1.430 metric tonnes.		

STANDARD & OPTIONAL EQUIPMENT

Standard and optional equipment may vary. Consult your Cat dealer for details.

BOOMS AND STICKS	STANDARD	OPTIONAL	HYDRAULIC SYSTEM	STANDARD	OPTIONAL
7.0 m (23'0") Mass boom		•	SmartBoom™		•
7.8 m (25'7") Reach boom		•	Boom and stick regeneration circuit	•	
2.57 m (8'5") Mass stick		•	Electronic main control valve	•	
2.84 m (9'4") Reach stick		•	Dedicated closed loop swing circuit	•	
3.0 m (9'10") Mass stick		•	Heavy lift mode	•	
3.6 m (11'10") Reach stick		•	Automatic hydraulic oil warmup	•	
4.15 m (13'7") Reach stick		•	Automatic swing parking brake	•	
4.67 m (15'4") Reach stick		•	High performance hydraulic return filter	•	
			Two speed travel	•	
			Bio hydraulic oil capability	•	
			Advanced tool control		•
			Medium-pressure auxiliary circuit		•
			Quick coupler circuit		•
CAB	STANDARD	OPTIONAL	SAFETY AND SECURITY	STANDARD	OPTIONAL
High-resolution 254 mm (10") LCD touchscreen monitor	•		Cat Command remote control		•
Heated seat with air-adjustable suspension (Deluxe only)	•		Caterpillar One Key security system	•	
Heated and cooled seat with automatic adjustable suspension (Premium only)		•	Lockable external tool/storage box	•	
Cat Stick Steer		•	Lockable door, fuel, and hydraulic tank	•	
Auxiliary relay		•	Lockable fuel drain compartment	•	
CAT TECHNOLOGY	STANDARD	OPTIONAL	Service platforms with anti-skid plate	•	
Cat Product Link	•		RH handrail and hand hold	•	
Cat Grade with 2D	•		Mirror package	•	
Cat Grade with Assist	•		Signaling/warning horn	•	
Cat Grade with Advanced 2D		•	Travel alarm	•	
Cat Grade with 3D		•	Swing alarm		•
Cat Payload	•		Ground-level secondary engine shutoff switch	•	
2D E-fence	•		Rearview and right-side-view cameras	•	
Lift Assist	•		360° visibility		•
Remote Services Capability	•		Boom lowering check valve		•
ELECTRICAL SYSTEM	STANDARD	OPTIONAL	Stick lowering check valve		•
Maintenance-free 1,400 CCA batteries (x2)	•		Inspection lighting		•
Centralized electrical disconnect switch	•		SERVICE AND MAINTENANCE	STANDARD	OPTIONAL
Chassis light	•		Integrated vehicle health management system		•
LED boom and cab lights		•	Auto lube ready	•	
ENGINE	STANDARD	OPTIONAL	Grouped location of engine oil and fuel filters	•	
Cold start block heaters		•	Scheduled Oil Sampling (S-O-S) ports	•	
Three selectable modes: Power, Smart, Eco	•		QuickEvac™ maintenance ready		•
Automatic engine speed control	•		Electric refueling pump with auto shutoff		•
Up to 4500 m (14,764 ft) altitude capability	•		UNDERCARRIAGE AND STRUCTURES	STANDARD	OPTIONAL
52°C (126°F) high-ambient cooling capacity	•		Long variable gauge undercarriage	•	
-18°C (-0.4°F) cold start capability	•		Towing eye on base frame	•	
Hydraulic reverse fan	•		Standard counterweight	•	
Double element air filter with integrated precleaner	•		Counterweight with removal device		•
Remote disable	•		650 mm (26") HD double grouser track shoes		•
			750 mm (30") HD double grouser track shoes		•
			900 mm (35") HD double grouser track shoes		•

Not all features are available in all regions. Please check with your local Cat dealer for specific offering availability in your area.
For additional information, refer to the Technical Specifications brochures for the 374 available at www.cat.com or your Cat dealer.

For more complete information on Cat products, dealer services and industry solutions, visit us on the web at www.cat.com

© 2022 Caterpillar. All Rights Reserved.

Materials and specifications are subject to change without notice. Featured machines in photos may include additional equipment. See your Cat dealer for available options.

CAT, CATERPILLAR, LET'S DO THE WORK, their respective logos, "Caterpillar Corporate Yellow," the "Power Edge" and Cat "Modern Hex" trade dress as well as corporate and product identity used herein, are trademarks of Caterpillar and may not be used without permission. VisionLink is a trademark of Caterpillar Inc., registered in the United States and in other countries.

www.cat.com www.caterpillar.com

AEXQ2924-02
Replaces AEXQ2924-01
Build Number: 07C
(N Am, Eur, Aus-NZ, Turkey)

