



330

Hydraulic Excavator

Technical Specifications

Configurations and features may vary by region. Please consult your Cat® dealer for availability in your area.

Table of Contents

Specifications	2
Engine	2
Swing Mechanism	2
Weights	2
Track	2
Drive	2
Hydraulic System	2
Service Refill Capacities	2
Standards	2
Sound Performance	2
Operating Weights and Ground Pressures	3
Major Component Weights	3
Dimensions	4
Working Ranges and Forces	5
Reach Boom Lift Capacities – Counterweight: 6700 kg (14,770 lb)	6
SLR Boom Lift Capacities – Counterweight: 6700 kg (14,770 lb)	10
Bucket Specifications and Compatibility	12
Thumb Specifications	14
Attachments Offering Guide	15
Standard and Optional Equipment	18
Dealer Installed Kits and Attachments	21

330 Hydraulic Excavator Specifications

Engine

Engine Model	Cat® C7.1	
Net Power – ISO 9249:2007	204 kW	273 hp
Engine Power – ISO 14396:2002	205 kW	275 hp
Bore	105 mm	4 in
Stroke	135 mm	5 in
Displacement	7.01 L	428 in ³

- Meets U.S. EPA Tier 4 Final, EU Stage V, and Japan 2014 emission standards.
- Recommended for use up to 4500 m (14,760 ft) altitude with engine power derate above 3000 m (9,840 ft).
- Net power is tested per ISO 9249:2007. Standards in effect at the time of manufacture.
- Net power available at the flywheel when the engine is equipped with fan, air cleaner, aftertreatment, and alternator with engine speed at 2,200 rpm.
- Rated speed at 2,200 rpm.

Swing Mechanism

Swing Speed	11.50 rpm	
Maximum Swing Torque	110 kN·m	81,132 lb-ft

Weights

Operating Weight – 800 mm (31") Triple Grouser Shoes	30 900 kg	68,100 lb
--	-----------	-----------

- Long undercarriage, reach boom, R3.2 m (10'6") stick, HD 1.76 m³ (2.30 yd³) bucket, 800 mm (31") triple grouser shoes and 6700 kg (14,770 lb) counterweight.

Track

Standard Track Shoes Width	800 mm	31 in
Optional Track Shoes Width	600 mm	24 in
Optional Track Shoes Width	700 mm	28 in
Number of Shoes (each side)	50	
Number of Track Rollers (each side)	9	
Number of Carrier Rollers (each side)	2	

Drive

Gradeability	35°/70%	
Maximum Travel Speed	5.3 km/h	3.3 mph
Maximum Drawbar Pull	248 kN	55,753 lbf

Hydraulic System

Main System – Maximum Flow – Implement	560 L/min (280 × 2 pumps)	148 gal/min (74 × 2 pumps)
Maximum Pressure – Equipment – Normal	35 000 kPa	5,075 psi
Maximum Pressure – Equipment – Lift Mode	38 000 kPa	5,510 psi
Maximum Pressure – Travel	35 000 kPa	5,075 psi
Maximum Pressure – Swing	29 800 kPa	4,320 psi
Boom Cylinder – Bore	140 mm	6 in
Boom Cylinder – Stroke	1407 mm	55 in
Stick Cylinder – Bore	150 mm	6 in
Stick Cylinder – Stroke	1646 mm	65 in
Bucket Cylinder – Bore	135 mm	5 in
Bucket Cylinder – Stroke	1156 mm	46 in

Service Refill Capacities

Fuel Tank Capacity	474 L	125.2 gal
Cooling System	25 L	6.6 gal
Engine Oil	25 L	6.6 gal
Swing Drive	10 L	2.6 gal
Final Drive (each)	5.5 L	1.5 gal
Hydraulic System (including tank)	310 L	81.9 gal
Hydraulic Tank	147 L	38.8 gal
DEF Tank	41 L	10.8 gal

Standards

Brakes	ISO 10265:2008
Cab/ROPS	ISO 12117-2:2008
FOGS (optional)	ISO 10262-2:1998

Sound Performance

ISO 6395:2008 (external)	103 dB(A)
ISO 6396:2008 (inside cab)	70 dB(A)

- Hearing protection may be needed when operating with an open operator station and cab (when not properly maintained or doors/windows open) for extended periods or in a noisy environment.

330 Hydraulic Excavator Specifications

Operating Weights and Ground Pressures

	800 mm (31") Triple Grouser Shoes		700 mm (28") HD Triple Grouser Shoes		600 mm (24") Single Grouser Shoes	
	Weight	Ground Pressure	Weight	Ground Pressure	Weight	Ground Pressure
	kg (lb)	kPa (psi)	kg (lb)	kPa (psi)	kg (lb)	kPa (psi)
Base machine with 6700 kg (14,770 lb) Counterweight and Long Undercarriage						
Reach Boom + R3.2CB2 (10'6") Stick + 1.76 m ³ (2.30 yd ³) HD Bucket	30 900 (68,100)	44 (6.4)	30 500 (67,300)	50 (7.2)	30 200 (66,600)	57 (8.3)
Reach Boom + R3.75CB2 (12'4") Stick + 1.76 m ³ (2.30 yd ³) HD Bucket	31 100 (68,600)	44 (6.4)	30 700 (67,700)	50 (7.3)	30 400 (67,000)	58 (8.4)
Super Long Reach Boom + SLR 7.85A (25'9") Stick + 0.57 m ³ (0.75 yd ³) DC Bucket	30 900 (68,200)	44 (6.4)	30 600 (67,300)	50 (7.2)	30 200 (66,600)	57 (8.3)

All operating weights include a 90% fuel tank with 75 kg (165 lb) operator.

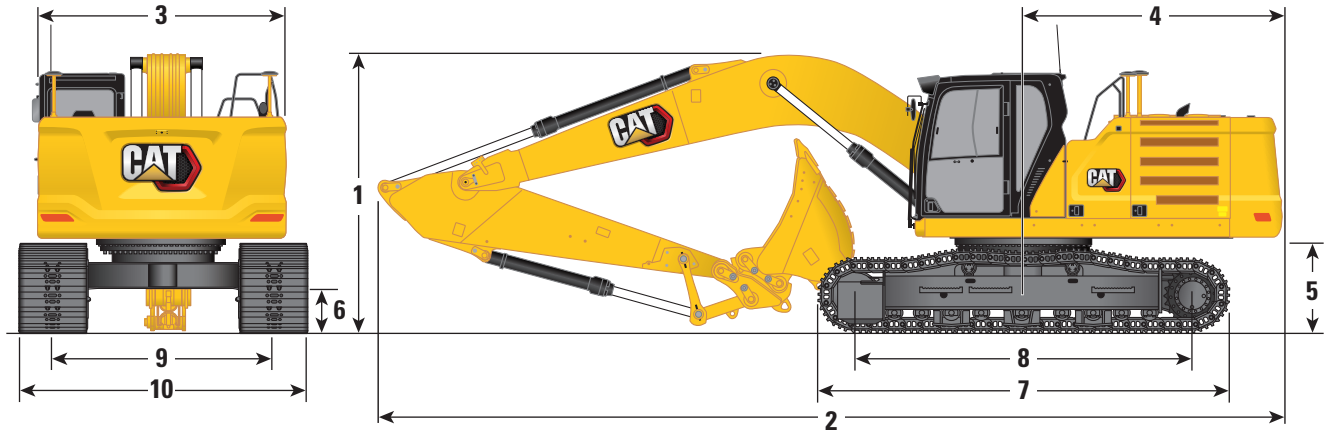
Major Component Weights

	kg	lb
Base machine (6700 kg [14,770 lb] counterweight, upper frame, long undercarriage with HD rollers) with boom cylinders and weight of 90% fuel tank and 75 kg (165 lb) operator included.	21 200	46,700
Track Shoes:		
800 mm (31") Width, 13 mm (0.51") Thick, Triple Grouser Track Shoes with Step Extension for ISO 2867	4590	10,120
700 mm (28") Width, 13 mm (0.51") Thick, HD Triple Grouser Track Shoes	4200	9,260
600 mm (24") Width, 15 mm (0.59") Thick, Single Grouser Track Shoes	3890	8,580
Two Boom Cylinders	490	1,080
Weight of 90% Fuel Tank and 75 kg (165 lb) Operator	460	1,010
Counterweight:		
6700 kg (14,770 lb) Counterweight	6700	14,770
Undercarriage:		
Long Undercarriage with HD Rollers	6700	14,800
Booms (including lines, pins, stick cylinder):		
Reach Boom 6.15 m (20'2")	2310	5,090
Super Long Reach Boom 10.2 m (33'6")	3200	7,050
Sticks (including lines, pins, bucket cylinder, bucket linkage):		
Reach Stick R3.2CB2 (10'6")	1470	3,240
Reach Stick R3.75CB2 (12'4")	1660	3,660
Super Long Reach Stick 7.85A (25'9")	1560	3,440
Buckets (without linkage, with tips and sidecutters):		
0.91 m ³ (1.19 yd ³) HD, CB Linkage	990	2,190
1.12 m ³ (1.46 yd ³) HD, CB Linkage	1090	2,400
1.33 m ³ (1.74 yd ³) HD, CB Linkage	1160	2,560
1.54 m ³ (2.01 yd ³) HD, CB Linkage	1260	2,780
1.76 m ³ (2.30 yd ³) HD, CB Linkage	1350	2,980
0.57 m ³ (0.75 yd ³) DC, A Linkage	390	860
Quick Couplers:		
Pin Grabber QC CB with Pins	530	1,170
Pin Grabber QC CB without Pins	500	1,100
Dedicated QC	430	950

330 Hydraulic Excavator Specifications

Dimensions

All dimensions are approximate and may vary depending on bucket selection.

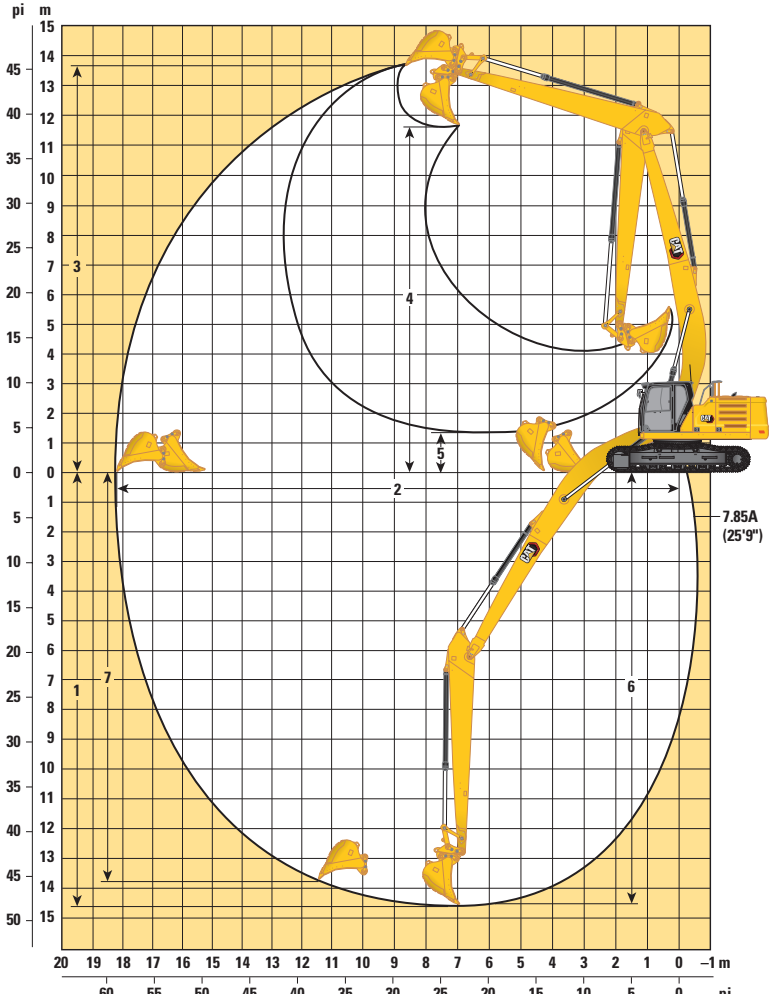
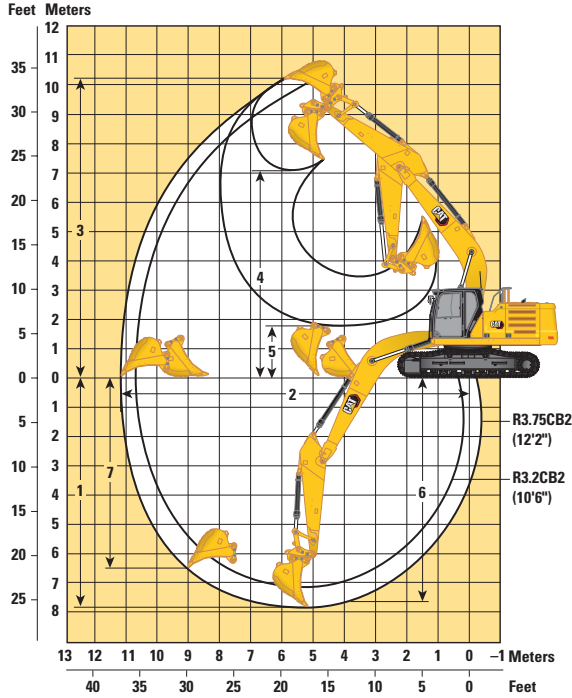


Boom Options	Reach Boom 6.15 m (20'2")				SLR Boom 10.2 m (33'6")	
	Stick Options				SLR Stick 7.85A (25'9")	
	Reach Stick R3.2CB2 (10'6")		R3.75CB2 (12'4")			
1 Machine Height:						
Cab Height	3060 mm	10'0"	3060 mm	10'0"	3060 mm	10'0"
FOGS Height	3200 mm	10'6"	3200 mm	10'6"	3200 mm	10'6"
Handrails Height	3060 mm	10'0"	3060 mm	10'0"	3060 mm	10'0"
With Boom/Stick/Bucket Installed	3400 mm	11'2"	3700 mm	12'2"	3230 mm	10'7"
With Boom/Stick Installed	3380 mm	11'1"	3700 mm	12'2"	3230 mm	10'7"
With Boom Installed	3060 mm	10'0"	3060 mm	10'0"	3060 mm	10'0"
2 Machine Length:						
With Boom/Stick/Bucket Installed	10 420 mm	34'2"	10 420 mm	34'2"	14 480 mm	47'6"
With Boom/Stick Installed	10 420 mm	34'2"	10 420 mm	34'2"	14 480 mm	47'6"
With Boom Installed	9230 mm	30'3"	9230 mm	30'3"	13 390 mm	43'11"
3 Upperframe Width without Walkways	2940 mm	9'8"	2940 mm	9'8"	2940 mm	9'8"
4 Tail Swing Radius	3130 mm	10'3"	3130 mm	10'3"	3130 mm	10'3"
5 Counterweight Clearance	1120 mm	3'8"	1120 mm	3'8"	1120 mm	3'8"
6 Ground Clearance	490 mm	1'7"	490 mm	1'7"	490 mm	1'7"
7 Track Length	3990 mm	13'1"	3990 mm	13'1"	3990 mm	13'1"
8 Length to Center of Rollers	4860 mm	15'11"	4860 mm	15'11"	4860 mm	15'11"
9 Track Gauge	2590 mm	8'6"	2590 mm	8'6"	2590 mm	8'6"
10 Undercarriage Width:						
600 mm (24") Shoes	3190 mm	10'6"	3190 mm	10'6"	3190 mm	10'6"
700 mm (28") Shoes	3290 mm	10'10"	3290 mm	10'10"	3290 mm	10'10"
800 mm (31") Shoes	3390 mm	11'1"	3390 mm	11'1"	3390 mm	11'1"
Bucket Type	HD		HD		DC	
Bucket Capacity	1.76 m ³	2.30 yd ³	1.76 m ³	2.30 yd ³	0.57 m ³	0.75 yd ³
Bucket Tip Radius	1660 mm	5'5"	1660 mm	5'5"	1090 mm	3'7"

330 Hydraulic Excavator Specifications

Working Ranges and Forces

All dimensions are approximate and may vary depending on bucket selection.



Boom Options

Reach Boom
6.15 m (20'2")

SLR Boom
10.2 m (33'6")

Stick Options

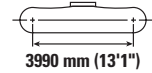
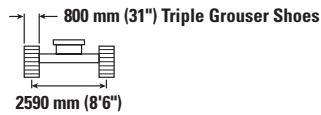
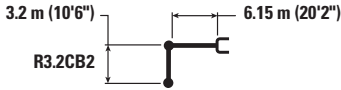
Reach Stick

SLR Stick
7.85A (25'9")

	R3.2CB2 (10'6")		R3.75CB2 (12'4")		7.85A (25'9")	
	HD	DC	HD	DC	HD	DC
1 Maximum Digging Depth	7240 mm	23'9"	7790 mm	25'7"	14 610 mm	47'11"
2 Maximum Reach at Ground Line	10 680 mm	35'0"	11 190 mm	36'9"	18 290 mm	60'0"
3 Maximum Cutting Height	10 030 mm	32'11"	10 210 mm	33'6"	13 590 mm	44'7"
4 Maximum Loading Height	6950 mm	22'10"	7140 mm	23'5"	11 560 mm	37'11"
5 Minimum Loading Height	2300 mm	7'7"	1750 mm	5'9"	1310 mm	4'4"
6 Maximum Depth Cut for 2440 mm (8 ft) Level Bottom	7090 mm	23'3"	7650 mm	25'1"	14 500 mm	47'7"
7 Maximum Vertical Wall Digging Depth	6010 mm	19'9"	6450 mm	21'2"	13 830 mm	45'4"
Bucket Digging Force (ISO)	179 kN	40,240 lbf	179 kN	40,240 lbf	60 kN	13,490 lbf
Stick Digging Force (ISO)	126 kN	28,330 lbf	114 kN	25,630 lbf	45 kN	10,120 lbf
Bucket Type	HD		HD		DC	
Bucket Capacity	1.76 m ³	2.30 yd ³	1.76 m ³	2.30 yd ³	0.57 m ³	0.75 yd ³
Bucket Tip Radius	1660 mm	5'5"	1660 mm	5'5"	1090 mm	3'7"

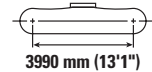
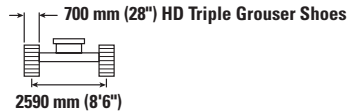
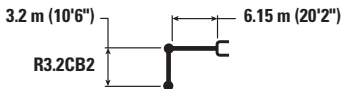
330 Hydraulic Excavator Specifications

Reach Boom Lift Capacities – Counterweight: 6700 kg (14,770 lb) – without Bucket, Heavy Lift: On



Reach Boom Length	Unit	1.5 m/5.0 ft		3.0 m/10.0 ft		4.5 m/15.0 ft		6.0 m/20.0 ft		7.5 m/25.0 ft		9.0 m/30.0 ft		m ft		
		Hydraulic	Tipping	Hydraulic	Tipping	Hydraulic	Tipping	Hydraulic	Tipping	Hydraulic	Tipping	Hydraulic	Tipping	kg	lb	
7.5 m 25.0 ft	kg lb													*5600 *12,350	*5600 *12,350	7.28 24.17
6.0 m 20.0 ft	kg lb								*7900 *16,700	6450 13,800				*5350 *11,750	*5350 *11,750	8.24 27.50
4.5 m 15.0 ft	kg lb							*9250 *20,050	8800 19,000	*8400 *18,300	6300 13,550			*5300 *11,650	4900 10,800	8.83 29.17
3.0 m 10.0 ft	kg lb					*14 250 *30,650	12 850 27,700	*10 800 *23,400	8450 18,200	*9150 *19,900	6150 13,200	*6500 4700		*5450 *11,950	4550 10,050	9.14 30.00
1.5 m 5.0 ft	kg lb					*17 000 *36,700	12 150 26,150	*12 300 *26,550	8100 17,450	9200 19,750	5950 12,800	7050 *13,650	4600 9,850	*5800 *12,700	4450 9,800	9.19 30.83
0 m 0 ft	kg lb					*18 300 *39,550	11 800 25,400	12 600 27,100	7850 16,950	9050 19,450	5800 12,500			*6350 *14,000	4550 10,000	8.99 30.00
-1.5 m -5.0 ft	kg lb	*6950 *15,550	*6950 *15,550	*10 950 *24,800	*10 950 *24,800	*18 250 *39,600	11 700 25,200	12 500 26,850	7750 16,700	8950 19,300	5750 12,350			*7350 *16,250	4850 10,700	8.52 28.33
-3.0 m -10.0 ft	kg lb	*12 500 *28,000	*12 500 *28,000	*17 650 *40,050	*17 650 *40,050	*17 150 *37,100	11 800 25,350	12 500 26,900	7750 16,750	9000 19,400	5800 12,500			8650 19,150	5550 12,300	7.73 25.83
-4.5 m -15.0 ft	kg lb			*19 900 *42,750	*19 900 *42,750	*14 600 *31,300	12 000 25,850	*10 800 *22,850	7950 17,150					*9500 *20,850	7150 16,000	6.51 21.67

Reach Boom Lift Capacities – Counterweight: 6700 kg (14,770 lb) – without Bucket, Heavy Lift: On



Reach Boom Length	Unit	1.5 m/5.0 ft		3.0 m/10.0 ft		4.5 m/15.0 ft		6.0 m/20.0 ft		7.5 m/25.0 ft		9.0 m/30.0 ft		m ft		
		Hydraulic	Tipping	Hydraulic	Tipping	Hydraulic	Tipping	Hydraulic	Tipping	Hydraulic	Tipping	Hydraulic	Tipping	kg	lb	
7.5 m 25.0 ft	kg lb													*5600 *12,350	*5600 *12,350	7.28 24.17
6.0 m 20.0 ft	kg lb								*7900 *16,700	6350 13,650				*5350 *11,750	*5350 *11,750	8.24 27.50
4.5 m 15.0 ft	kg lb							*9250 *20,050	8750 18,800	*8400 *18,300	6250 13,400			*5300 *11,650	4850 10,700	8.83 29.17
3.0 m 10.0 ft	kg lb					*14 250 *30,650	12 700 27,400	*10 800 *23,400	8350 18,000	*9150 *19,900	6050 13,050	*6500 4600		*5450 *11,950	4500 9,950	9.14 30.00
1.5 m 5.0 ft	kg lb					*17 000 *36,700	12 000 25,900	*12 300 *26,550	8000 17,250	9100 19,550	5900 12,650	6950 *13,650	4550 9,750	*5800 *12,700	4400 9,700	9.19 30.83
0 m 0 ft	kg lb					*18 300 *39,550	11 700 25,100	12 450 26,800	7750 16,750	8950 19,200	5750 12,350			*6350 *14,000	4500 9,850	8.99 30.00
-1.5 m -5.0 ft	kg lb	*6950 *15,550	*6950 *15,550	*10 950 *24,800	*10 950 *24,800	*18 250 *39,600	11 600 24,900	12 350 26,550	7650 16,500	8850 19,050	5650 12,200			*7350 *16,250	4800 10,600	8.52 28.33
-3.0 m -10.0 ft	kg lb	*12 500 *28,000	*12 500 *28,000	*17 650 *40,050	*17 650 *40,050	*17 150 *37,100	11 650 25,050	12 350 26,600	7700 16,550	8900 19,200	5700 12,350			8550 18,900	5500 12,200	7.73 25.83
-4.5 m -15.0 ft	kg lb			*19 900 *42,750	*19 900 *42,750	*14 600 *31,300	11 850 25,550	*10 800 *22,850	7850 16,950					*9500 *20,850	7050 15,850	6.51 21.67



ISO 10567:2007



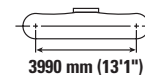
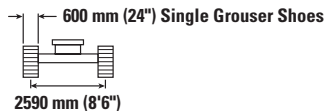
* Indicates that the load is limited by hydraulic lifting capacity rather than tipping load. The above loads are in compliance with hydraulic excavator lift capacity standard ISO 10567:2007. They do not exceed 87% of hydraulic lifting capacity or 75% of tipping load. Weight of all lifting accessories must be deducted from the above lifting capacities. Lifting capacities are based on the machine standing on a firm, uniform supporting surface. The use of a work tool attachment point to handle/lift objects, could affect the machine lift performance.

Lift capacity stays with ±5% for all available track shoes.

Always refer to the appropriate Operation and Maintenance Manual for specific product information.

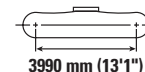
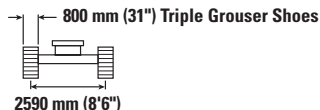
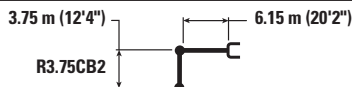
330 Hydraulic Excavator Specifications

Reach Boom Lift Capacities – Counterweight: 6700 kg (14,770 lb) – without Bucket, Heavy Lift: On



		1.5 m/5.0 ft		3.0 m/10.0 ft		4.5 m/15.0 ft		6.0 m/20.0 ft		7.5 m/25.0 ft		9.0 m/30.0 ft		m ft		
7.5 m 25.0 ft	kg lb													*5600 *12,350	*5600 *12,350	7.28 24.17
6.0 m 20.0 ft	kg lb									*7900 *16,700	6300 13,550			*5350 *11,750	*5350 *11,750	8.24 27.50
4.5 m 15.0 ft	kg lb							*9250 *20,050	8650 18,650	*8400 *18,300	6200 13,300			*5300 *11,650	4800 10,600	8.83 29.17
3.0 m 10.0 ft	kg lb					*14 250 *30,650	12 600 27,200	*10 800 *23,400	8300 17,850	*9150 *19,800	6000 12,950	*6500 4600		*5450 *11,950	4500 9,850	9.14 30.00
1.5 m 5.0 ft	kg lb					*17 000 *36,700	11 900 25,650	*12 300 *26,550	7950 17,100	9000 19,350	5800 12,550	6900 *13,650	4500 9,650	*5800 *12,700	4350 9,600	9.19 30.83
0 m 0 ft	kg lb					*18 300 *39,550	11 600 24,900	12 350 26,550	7700 16,600	8850 19,050	5700 12,250			*6350 *14,000	4450 9,800	8.99 30.00
-1.5 m -5.0 ft	kg lb	*6950 *15,550	*6950 *15,550	*10 950 *24,800	*10 950 *24,800	*18 250 *39,600	11 500 24,700	12 250 26,300	7600 16,350	8800 18,900	5600 12,100			7350 16,200	4750 10,500	8.52 28.33
-3.0 m -10.0 ft	kg lb	*12 500 *28,000	*12 500 *28,000	*17 650 *40,050	*17 650 *40,050	*17 150 *37,100	11 550 24,850	12 250 26,350	7600 16,400	8800 19,000	5650 12,200			8450 18,750	5450 12,050	7.73 25.83
-4.5 m -15.0 ft	kg lb			*19 900 *42,750	*19 900 *42,750	*14 600 *31,300	11 750 25,350	*10 800 *22,850	7800 16,800					*9500 *20,850	7000 15,700	6.51 21.67

Reach Boom Lift Capacities – Counterweight: 6700 kg (14,770 lb) – without Bucket, Heavy Lift: On



		1.5 m/5.0 ft		3.0 m/10.0 ft		4.5 m/15.0 ft		6.0 m/20.0 ft		7.5 m/25.0 ft		9.0 m/30.0 ft		m ft		
7.5 m 25.0 ft	kg lb									*6000 *12,100	*6000 *12,100			*4800 *10,600	*4800 *10,600	7.90 25.83
6.0 m 20.0 ft	kg lb									*7200 *15,650	6500 13,900			*4600 *10,100	*4600 *10,100	8.79 29.17
4.5 m 15.0 ft	kg lb							*8400 *18,250	*8400 *18,250	*7750 *16,900	6350 13,600	*6050 *11,950	4750 10,150	*4550 *10,050	4450 9,850	9.34 30.83
3.0 m 10.0 ft	kg lb					*12 850 *27,600	*12 850 *27,600	*10 000 *21,650	8500 18,250	*8600 *18,650	6100 13,150	7100 *15,200	4650 10,000	*4700 *10,300	4200 9,200	9.64 31.67
1.5 m 5.0 ft	kg lb					*15 900 *34,300	12 150 26,200	*11 600 *25,100	8050 17,400	9150 19,700	5900 12,700	7000 15,000	4550 9,750	*4950 *10,900	4050 8,950	9.69 32.50
0 m 0 ft	kg lb			*6750 *15,450	*6750 *15,450	*17 700 *38,250	11 700 25,150	12 550 26,950	7750 16,750	8950 19,250	5700 12,300	6900 14,800	4450 9,550	*5400 *11,900	4150 9,100	9.50 31.67
-1.5 m -5.0 ft	kg lb	*6650 *14,850	*6650 *14,850	*10 600 *24,000	*10 600 *24,000	*18 150 *39,350	11 500 24,700	12 350 26,550	7600 16,400	8850 19,050	5600 12,100	*6700 4400		*6200 *13,650	4400 9,650	9.06 30.00
-3.0 m -10.0 ft	kg lb	*11 000 *24,700	*11 000 *24,700	*15 850 *35,900	*15 850 *35,900	*17 500 *37,900	11 500 24,750	12 300 26,450	7600 16,350	8850 19,050	5600 12,100			*7550 *16,700	4950 10,900	8.32 27.50
-4.5 m -15.0 ft	kg lb	*16 400 *36,400	*16 400 *36,400	*21 850 *47,100	*21 850 *47,100	*15 600 *33,550	11 700 25,150	*11 650 *24,950	7700 16,600					*9050 *19,950	6050 13,550	7.20 23.33
-6.0 m -20.0 ft	kg lb					*11 350 *23,650	*11 350 *23,650							*8850 *22,000	*8850 *22,000	5.44 16.67



ISO 10567:2007



* Indicates that the load is limited by hydraulic lifting capacity rather than tipping load. The above loads are in compliance with hydraulic excavator lift capacity standard ISO 10567:2007.

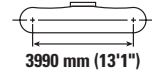
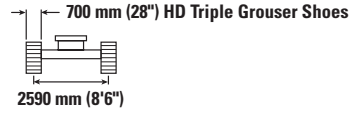
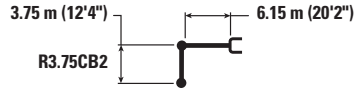
They do not exceed 87% of hydraulic lifting capacity or 75% of tipping load. Weight of all lifting accessories must be deducted from the above lifting capacities. Lifting capacities are based on the machine standing on a firm, uniform supporting surface. The use of a work tool attachment point to handle/lift objects, could affect the machine lift performance.

Lift capacity stays with ±5% for all available track shoes.

Always refer to the appropriate Operation and Maintenance Manual for specific product information.

330 Hydraulic Excavator Specifications

Reach Boom Lift Capacities – Counterweight: 6700 kg (14,770 lb) – without Bucket, Heavy Lift: On



Reach	Unit	1.5 m/5.0 ft		3.0 m/10.0 ft		4.5 m/15.0 ft		6.0 m/20.0 ft		7.5 m/25.0 ft		9.0 m/30.0 ft		m ft	
		kg	lb	kg	lb	kg	lb	kg	lb	kg	lb	kg	lb	kg	lb
7.5 m	kg									*6000	*6000			*4800	7.90
25.0 ft	lb									*12,100	*12,100			*10,600	25.83
6.0 m	kg									*7200	6400			*4600	8.79
20.0 ft	lb									*15,650	13,750			*10,100	29.17
4.5 m	kg							*8400	*8400	*7750	6250	*6050	4700	*4550	9.34
15.0 ft	lb							*18,250	*18,250	*16,900	13,450	*11,950	10,050	*10,050	30.83
3.0 m	kg					*12 850	*12 850	*10 000	8400	*8600	6050	7000	4600	*4700	9.64
10.0 ft	lb					*27,600	*27,600	*21,650	18,050	*18,650	13,000	15,050	9,850	*10,300	31.67
1.5 m	kg					*15 900	12 050	*11 600	8000	9050	5850	6900	4500	*4950	9.69
5.0 ft	lb					*34,300	25,950	*25,100	17,200	19,450	12,550	14,800	9,650	*10,900	32.50
0 m	kg			*6750	*6750	*17 700	11 550	12 400	7700	8850	5650	6800	4400	*5400	9.50
0 ft	lb			*15,450	*15,450	*38,250	24,850	26,600	16,550	19,050	12,150	14,600	9,450	*11,900	31.67
-1.5 m	kg	*6650	*6650	*10 600	*10 600	*18 150	11 350	12 200	7500	8750	5550	*6700	4350	*6200	9.06
-5.0 ft	lb	*14,850	*14,850	*24,000	*24,000	*39,350	24,450	26,200	16,200	18,800	11,950			*13,650	30.00
-3.0 m	kg	*11 000	*11 000	*15 850	*15 850	*17 500	11 350	12 150	7500	8750	5550			*7550	8.32
-10.0 ft	lb	*24,700	*24,700	*35,900	*35,900	*37,900	24,450	26,150	16,150	18,800	11,950			*16,700	27.50
-4.5 m	kg	*16 400	*16 400	*21 850	*21 850	*15 600	11 550	*11 650	7600					*9050	7.20
-15.0 ft	lb			*47,100	*47,100	*33,550	24,850	*24,950	16,400					*19,950	23.33
-6.0 m	kg					*11 350	*11 350							*8850	5.44
-20.0 ft	lb					*23,650	*23,650							*22,000	16.67



ISO 10567:2007



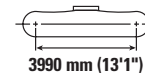
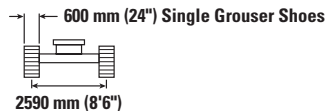
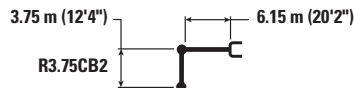
* Indicates that the load is limited by hydraulic lifting capacity rather than tipping load. The above loads are in compliance with hydraulic excavator lift capacity standard ISO 10567:2007. They do not exceed 87% of hydraulic lifting capacity or 75% of tipping load. Weight of all lifting accessories must be deducted from the above lifting capacities. Lifting capacities are based on the machine standing on a firm, uniform supporting surface. The use of a work tool attachment point to handle/lift objects, could affect the machine lift performance.

Lift capacity stays with ±5% for all available track shoes.

Always refer to the appropriate Operation and Maintenance Manual for specific product information.

330 Hydraulic Excavator Specifications

Reach Boom Lift Capacities – Counterweight: 6700 kg (14,770 lb) – without Bucket, Heavy Lift: On



Reach	Unit	1.5 m/5.0 ft		3.0 m/10.0 ft		4.5 m/15.0 ft		6.0 m/20.0 ft		7.5 m/25.0 ft		9.0 m/30.0 ft		m ft		
		kg	lb	kg	lb	kg	lb	kg	lb	kg	lb	kg	lb	kg	lb	
7.5 m 25.0 ft	kg lb									*6000 *12,100	*6000 *12,100			*4800 *10,600	*4800 *10,600	7.90 25.83
6.0 m 20.0 ft	kg lb									*7200 *15,650	6350 13,650			*4600 *10,100	*4600 *10,100	8.79 29.17
4.5 m 15.0 ft	kg lb							*8400 *18,250	*8400 *18,250	*7750 *16,900	6200 13,350	*6050 *11,950	4650 9,950	*4550 *10,050	4350 9,650	9.34 30.83
3.0 m 10.0 ft	kg lb					*12 850 *27,600	12 750 27,500	*10 000 *21,650	8300 17,900	*8600 *18,650	6000 12,900	6950 14,950	4550 9,750	*4700 *10,300	4100 9,000	9.64 31.67
1.5 m 5.0 ft	kg lb					*15 900 *34,300	11 950 25,700	*11 600 *25,100	7900 17,050	8950 19,250	5800 12,450	6850 14,700	4450 9,550	*4950 *10,900	4000 8,750	9.69 32.50
0 m 0 ft	kg lb			*6750 *15,450	*6750 *15,450	*17 700 *38,250	11 450 24,650	12 250 26,350	7600 16,400	8750 18,850	5600 12,050	6750 14,500	4350 9,350	*5400 *11,900	4050 8,900	9.50 31.67
-1.5 m -5.0 ft	kg lb	*6650 *14,850	*6650 *14,850	*10 600 *24,000	*10 600 *24,000	*18 150 *39,350	11 250 24,200	12 100 25,950	7450 16,050	8650 18,650	5500 11,850	*6700 *14,500	4300 9,350	*6200 *13,650	4300 9,450	9.06 30.00
-3.0 m -10.0 ft	kg lb	*11 000 *24,700	*11 000 *24,700	*15 850 *35,900	*15 850 *35,900	*17 500 *37,900	11 250 24,250	12 050 25,900	7450 16,000	8650 18,650	5500 11,850			7500 16,600	4800 10,650	8.32 27.50
-4.5 m -15.0 ft	kg lb	*16 400 *36,100	*16 400 *36,100	*21 850 *47,100	*21 850 *47,100	*15 600 *33,550	11 450 24,650	*11 650 *24,950	7550 16,250					*9050 *19,950	5950 13,250	7.20 23.33
-6.0 m -20.0 ft	kg lb					*11 350 *23,650	*11 350 *23,650							*8850 *19,500	*8850 *19,500	5.44 16.67



ISO 10567:2007



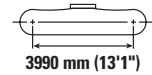
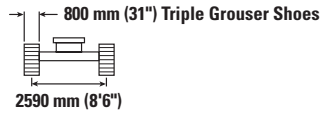
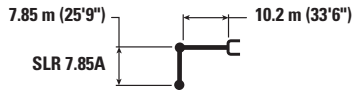
* Indicates that the load is limited by hydraulic lifting capacity rather than tipping load. The above loads are in compliance with hydraulic excavator lift capacity standard ISO 10567:2007. They do not exceed 87% of hydraulic lifting capacity or 75% of tipping load. Weight of all lifting accessories must be deducted from the above lifting capacities. Lifting capacities are based on the machine standing on a firm, uniform supporting surface. The use of a work tool attachment point to handle/lift objects, could affect the machine lift performance.

Lift capacity stays with ±5% for all available track shoes.

Always refer to the appropriate Operation and Maintenance Manual for specific product information.

330 Hydraulic Excavator Specifications

SLR Boom Lift Capacities – Counterweight: 6700 kg (14,770 lb) – without Bucket



Reach	Unit	1.5 m/5.0 ft		3.0 m/10.0 ft		4.5 m/15.0 ft		6.0 m/20.0 ft		7.5 m/25.0 ft		9.0 m/30.0 ft		m ft			
		kg	lb	kg	lb	kg	lb	kg	lb	kg	lb	kg	lb	kg	lb		
12.0 m 40.0 ft	kg lb													*1350 *2,950	*1350 *2,950	14.03 45.83	
10.5 m 35.0 ft	kg lb													*1300 *2,800	*1300 *2,800	15.01 49.17	
9.0 m 30.0 ft	kg lb													*1250 *2,750	*1250 *2,750	15.78 51.67	
7.5 m 25.0 ft	kg lb													*1250 *2,750	*1250 *2,750	16.37 54.17	
6.0 m 20.0 ft	kg lb													*1250 *2,750	*1250 *2,750	16.81 55.00	
4.5 m 15.0 ft	kg lb													*1300 *2,800	*1300 *2,800	17.11 56.67	
3.0 m 10.0 ft	kg lb			*4050	*4050								*4150 *9,000	*4150 *9,000	*1350 *2,900	*1350 *2,900	17.27 56.67
1.5 m 5.0 ft	kg lb			*1550 *3,550	*1550 *3,550	*5200 *12,150	*5200 *12,150	*7400 *15,950	7350 15,850	*5750 *12,350	5450 11,800	*4750 *10,300	4250 9,200	*1400 *3,000	*1400 *3,000	17.30 56.67	
0 m 0 ft	kg lb			*1650 *3,750	*1650 *3,750	*3600 *8,250	*3600 *8,250	*8250 *18,500	6600 14,250	*6550 *14,100	5000 10,750	*5350 *11,550	3950 8,500	*1450 *3,150	1450 3,150	17.19 56.67	
-1.5 m -5.0 ft	kg lb	*1650 *3,600	*1650 *3,600	*2150 *4,800	*2150 *4,800	*3550 *8,000	*3550 *8,000	*6500 *14,900	6150 13,250	*7200 *15,500	4650 10,000	*5800 *12,550	3700 7,950	*1550 *3,400	1450 3,150	16.96 55.83	
-3.0 m -10.0 ft	kg lb	*2250 *4,950	*2250 *4,950	*2750 *6,100	*2750 *6,100	*3900 *8,750	*3900 *8,750	*6250 *14,250	5900 12,650	*7600 *16,300	4400 9,500	*5900 *12,700	3500 7,500	*1650 *3,650	1500 3,250	16.58 55.00	
-4.5 m -15.0 ft	kg lb	*2850 *6,300	*2850 *6,300	*3350 *7,500	*3350 *7,500	*4450 *10,050	*4450 *10,050	*6600 *14,950	5750 12,400	*7450 *16,000	4300 9,200	*5800 *12,450	3400 7,250	*1850 *4,050	1550 3,350	16.05 52.50	
-6.0 m -20.0 ft	kg lb	*3450 *7,750	*3450 *7,750	*4050 *9,050	*4050 *9,050	*5150 *11,650	*5150 *11,650	*7250 *16,500	5750 12,400	*7400 *15,900	4250 9,100	*5700 *12,300	3350 7,150	*2100 *4,600	1650 3,600	15.36 50.83	
-7.5 m -25.0 ft	kg lb	*4150 *9,250	*4150 *9,250	*4800 *10,800	*4800 *10,800	*6050 *13,600	*6050 *13,600	*8250 *18,850	5800 12,550	*7400 *15,950	4250 9,150	*5700 *12,300	3350 7,150	*2400 *5,350	1800 4,000	14.47 47.50	
-9.0 m -30.0 ft	kg lb	*4900 *10,900	*4900 *10,900	*5650 *12,750	*5650 *12,750	*7050 *16,000	*7050 *16,000	*9550 *20,650	5950 12,850	*7500 *16,150	4350 9,350	*5800 *12,450	3400 7,300	*2950 *6,600	2050 4,600	13.36 44.17	
-10.5 m -35.0 ft	kg lb	*5700 *12,750	*5700 *12,750	*6650 *15,000	*6650 *15,000	*8350 *19,050	*8350 *19,050	*8850 *18,950	6150 13,350	*7150 *15,350	4500 9,700	*5900 *12,700	3500 7,600	*3900 *8,950	2450 5,550	11.96 39.17	
-12.0 m -40.0 ft	kg lb			*7850 *17,700	*7850 *17,700	*9800 *20,750	*9800 *20,750	*7700 *16,300	6500 14,050	*6250 *13,200	4750 10,250	*5100 *10,700	3700 8,100	*4350 *9,600	3200 7,400	10.14 32.50	



ISO 10567:2007



* Indicates that the load is limited by hydraulic lifting capacity rather than tipping load. The above loads are in compliance with hydraulic excavator lift capacity standard ISO 10567:2007. They do not exceed 87% of hydraulic lifting capacity or 75% of tipping load. Weight of all lifting accessories must be deducted from the above lifting capacities. Lifting capacities are based on the machine standing on a firm, uniform supporting surface. The use of a work tool attachment point to handle/lift objects, could affect the machine lift performance.

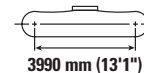
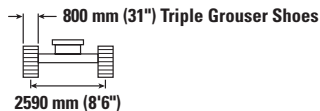
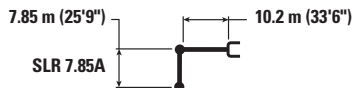
Lift capacity stays with ±5% for all available track shoes.

Always refer to the appropriate Operation and Maintenance Manual for specific product information.

(continued on next page)

330 Hydraulic Excavator Specifications

SLR Boom Lift Capacities – Counterweight: 6700 kg (14,770 lb) – without Bucket (continued)



		10.5 m/35.0 ft		12.0 m/40.0 ft		13.5 m/45.0 ft		15.0 m/50.0 ft		16.5 m/55.0 ft		m ft		
12.0 m 40.0 ft	kg lb					*3,350	*3,350					*1,350 *2,950	*1,350 *2,950	14.03 45.83
10.5 m 35.0 ft	kg lb							*1,300	*1,300			*1,300 *2,800	*1,300 *2,800	15.01 49.17
9.0 m 30.0 ft	kg lb							*2,100 *3,950	*2,100 *3,950			*1,250 *2,750	*1,250 *2,750	15.78 51.67
7.5 m 25.0 ft	kg lb					*2,650 *5,800	*2,650 *5,800	*2,550 *5,200	2,250 4,700			*1,250 *2,750	*1,250 *2,750	16.37 54.17
6.0 m 20.0 ft	kg lb					*2,800 *6,100	2,650 5,700	*2,750 *6,050	2,150 4,600	*1,700 *2,850	*1,700 *2,850	*1,250 *2,750	*1,250 *2,750	16.81 55.00
4.5 m 15.0 ft	kg lb			*3,100 *6,800	*3,100 *6,750	*3,000 *6,500	2,550 5,450	*2,900 *6,300	2,100 4,450	*2,100 *3,850	1,700 3,650	*1,300 *2,800	*1,300 *2,800	17.11 56.67
3.0 m 10.0 ft	kg lb	*3,700 *8,050	3,650 7,900	*3,400 *7,400	2,950 6,350	*3,200 *6,950	2,450 5,200	*3,050 *6,650	2,000 4,300	*2,350 *4,500	1,650 3,550	*1,350 *2,900	*1,350 *2,900	17.27 56.67
1.5 m 5.0 ft	kg lb	*4,150 *9,000	3,400 7,350	*3,750 *8,100	2,800 6,000	*3,450 *7,450	2,300 4,950	3,150 6,750	1,950 4,100	*2,550 *4,800	1,600 3,400	*1,400 *3,000	*1,400 *3,000	17.30 56.67
0 m 0 ft	kg lb	*4,550 *9,850	3,200 6,850	*4,050 *8,750	2,650 5,650	3,600 7,700	2,200 4,700	3,050 6,550	1,850 3,950	*2,550 *4,750	1,550 3,300	*1,450 *3,150	1,450 3,150	17.19 56.67
-1.5 m -5.0 ft	kg lb	*4,900 *10,650	3,000 6,450	4,100 8,850	2,500 5,350	3,500 7,500	2,100 4,500	3,000 6,400	1,750 3,800	*2,400 *4,150	1,500 3,200	*1,550 *3,400	1,450 3,150	16.96 55.83
-3.0 m -10.0 ft	kg lb	4,800 10,300	2,850 6,150	4,000 8,600	2,400 5,100	3,400 7,300	2,000 4,300	2,950 6,300	1,700 3,650	*1,850 1,500	1,500	*1,650 *3,650	1,500 3,250	16.58 55.00
-4.5 m -15.0 ft	kg lb	4,700 10,100	2,750 5,950	3,900 8,450	2,300 4,950	3,350 7,200	1,950 4,200	2,900 6,250	1,700 3,600			*1,850 *4,050	1,550 3,350	16.05 52.50
-6.0 m -20.0 ft	kg lb	4,650 10,000	2,700 5,850	3,900 8,350	2,250 4,900	3,350 7,150	1,950 4,150	2,900 *4,950	1,700 3,650			*2,100 *4,600	1,650 3,600	15.36 50.83
-7.5 m -25.0 ft	kg lb	4,650 10,000	2,700 5,850	3,900 8,400	2,300 4,900	3,350 7,200	1,950 4,200					*2,400 *5,350	1,800 4,000	14.47 47.50
-9.0 m -30.0 ft	kg lb	4,700 10,150	2,750 5,950	3,950 8,500	2,350 5,050							*2,950 *6,600	2,050 4,600	13.36 44.17
-10.5 m -35.0 ft	kg lb	4,800 10,400	2,900 6,250									*3,900 *8,950	2,450 5,550	11.96 39.17
-12.0 m -40.0 ft	kg lb											*4,350 *9,600	3,200 7,400	10.14 32.50



ISO 10567:2007



* Indicates that the load is limited by hydraulic lifting capacity rather than tipping load. The above loads are in compliance with hydraulic excavator lift capacity standard ISO 10567:2007. They do not exceed 87% of hydraulic lifting capacity or 75% of tipping load. Weight of all lifting accessories must be deducted from the above lifting capacities. Lifting capacities are based on the machine standing on a firm, uniform supporting surface. The use of a work tool attachment point to handle/lift objects, could affect the machine lift performance.

Lift capacity stays with ±5% for all available track shoes.

Always refer to the appropriate Operation and Maintenance Manual for specific product information.

330 Hydraulic Excavator Specifications

Bucket Specifications and Compatibility

	Linkage	Width		Capacity		Weight		Fill %	6.7 mt (14,770 lb) Counterweight		
		mm	in	m ³	yd ³	kg	lb		Reach Boom		SLR Boom
									R3.75CB2 (12'4")	R3.2CB2 (10'6")	SLR 7.85A (25'9")
Pin-On (No Quick Coupler)											
General Duty Capacity	CB	600	24	0.63	0.83	724	1,597	100	●	●	
	CB	750	30	0.86	1.13	811	1,788	100	●	●	
	CB	900	36	1.09	1.43	908	2,002	100	●	●	
	CB	1050	42	1.34	1.75	980	2,161	100	●	●	
	CB	1200	48	1.58	2.07	1072	2,363	100	⊙	●	
	CB	1350	54	1.83	2.40	1166	2,570	100	⊖	⊙	
General Duty Capacity – Wide Tip	CB	600	24	0.63	0.83	749	1,652	100	●	●	
	CB	750	30	0.86	1.13	845	1,863	100	●	●	
	CB	900	36	1.09	1.43	942	2,077	100	●	●	
	CB	1050	42	1.34	1.75	1022	2,253	100	●	●	
	CB	1200	48	1.58	2.07	1123	2,475	100	⊙	●	
	CB	1350	54	1.83	2.40	1224	2,698	100	⊖	⊙	
Heavy Duty	CB	600	24	0.52	0.68	733	1,616	100	●	●	
	CB	750	30	0.71	0.93	851	1,876	100	●	●	
	CB	900	36	0.91	1.19	945	2,084	100	●	●	
	CB	1050	42	1.12	1.46	1041	2,295	100	●	●	
	CB	1200	48	1.33	1.74	1112	2,452	100	●	●	
	CB	1350	54	1.54	2.02	1212	2,672	100	⊙	●	
	CB	1500	60	1.76	2.30	1306	2,879	100	⊖	⊙	
	CB	1650	66	1.97	2.58	1383	3,048	100	○	⊖	
Heavy Duty Power	CB	1050	42	1.12	1.47	1070	2,360	100	●	●	
	CB	1200	48	1.33	1.73	1148	2,532	100	●	●	
	CB	1350	54	1.53	2.01	1253	2,762	100	⊙	●	
Severe Duty	CB	600	24	0.52	0.68	755	1,665	90	●	●	
	CB	750	30	0.71	0.93	915	2,017	90	●	●	
	CB	900	36	0.91	1.19	1000	2,204	90	●	●	
	CB	1050	42	1.12	1.46	1099	2,424	90	●	●	
	CB	1200	48	1.33	1.74	1177	2,596	90	●	●	
Ditch Cleaning	A	1150	45	0.60	0.78	292	644	100			○
	A	1200	48	0.57	0.74	388	855	100			○
	A	1500	60	0.74	0.97	455	1,003	100			◇
General Duty	A	900	36	0.53	0.69	394	869	100			○
											○
Maximum load with pin-on (payload + bucket)								kg	4135	4605	1135
								lb	9,116	10,152	2,502

Maximum Material Density:

- 2100 kg/m³ (3,500 lb/yd³)
- ⊙ 1800 kg/m³ (3,000 lb/yd³)
- ⊖ 1500 kg/m³ (2,500 lb/yd³)
- 1200 kg/m³ (2,000 lb/yd³)
- ◇ 900 kg/m³ (1,500 lb/yd³)

The above loads are in compliance with hydraulic excavator standard EN474-5:2006+A3:2013, they do not exceed 87% of hydraulic lifting capacity or 75% of tipping capacity with front linkage fully extended at ground line with bucket curled.

Capacity based on ISO 7451:2007

Bucket weight with General Duty tips.

Caterpillar recommends using appropriate work tools to maximize the value customers receive from our products. Use of work tools, including buckets, which are outside of Caterpillar's recommendations or specifications for weight, dimensions, flows, pressures, etc. may result in less-than-optimal performance, including but not limited to reductions in production, stability, reliability, and component durability. Improper use of a work tool resulting in sweeping, prying, twisting and/or catching of heavy loads will reduce the life of the boom and stick.

(continued on next page)

330 Hydraulic Excavator Specifications

Bucket Specifications and Compatibility (continued)

	Linkage	Width		Capacity		Weight		Fill %	6.7 mt (14,770 lb) Counterweight		
		mm	in	m ³	yd ³	kg	lb		Reach Boom		SLR Boom
									R3.75CB2 (12'4")	R3.2CB2 (10'6")	SLR 7.85A (25'9")
With Pin Grabber Quick Coupler											
General Duty Capacity	CB	600	24	0.63	0.83	724	1,597	100	●	●	
	CB	750	30	0.86	1.13	811	1,788	100	●	●	
	CB	900	36	1.09	1.43	908	2,002	100	●	●	
	CB	1050	42	1.34	1.75	980	2,161	100	●	●	
	CB	1200	48	1.58	2.07	1072	2,363	100	⊙	●	
General Duty Capacity – Wide Tip	CB	1350	54	1.83	2.40	1166	2,570	100	⊖	⊙	
	CB	600	24	0.63	0.83	749	1,652	100	●	●	
	CB	750	30	0.86	1.13	845	1,863	100	●	●	
	CB	900	36	1.09	1.43	942	2,077	100	●	●	
	CB	1050	42	1.34	1.75	1022	2,253	100	●	●	
Heavy Duty	CB	1200	48	1.58	2.07	1123	2,475	100	⊙	●	
	CB	1350	54	1.83	2.40	1224	2,698	100	⊖	⊙	
	CB	600	24	0.52	0.68	733	1,616	100	●	●	
	CB	750	30	0.71	0.93	851	1,876	100	●	●	
	CB	900	36	0.91	1.19	945	2,084	100	●	●	
	CB	1050	42	1.12	1.46	1041	2,295	100	●	●	
	CB	1200	48	1.33	1.74	1112	2,452	100	●	●	
Heavy Duty Power	CB	1350	54	1.54	2.02	1212	2,672	100	⊙	●	
	CB	1500	60	1.76	2.30	1306	2,879	100	⊖	⊙	
	CB	1650	66	1.97	2.58	1383	3,048	100	○	⊖	
	CB	1050	42	1.12	1.47	1070	2,360	100	●	●	
	CB	1200	48	1.33	1.73	1148	2,532	100	●	●	
	CB	1350	54	1.53	2.01	1253	2,762	100	⊙	●	
Heavy Duty – Pin Grabber Performance	CB	750	30	0.70	0.91	879	1,938	100	●	●	
	CB	1050	42	1.08	1.42	1110	2,448	100	●	●	
	CB	1200	48	1.28	1.68	1191	2,626	100	●	●	
	CB	1350	54	1.49	1.94	1299	2,864	100	⊙	●	
	CB	1500	60	1.69	2.21	1406	3,099	100	⊖	⊙	
Severe Duty	CB	600	24	0.52	0.68	755	1,665	90	●	●	
	CB	750	30	0.71	0.93	915	2,017	90	●	●	
	CB	900	36	0.91	1.19	1000	2,204	90	●	●	
	CB	1050	42	1.12	1.46	1099	2,424	90	●	●	
	CB	1200	48	1.33	1.74	1177	2,596	90	●	●	
Severe Duty – Pin Grabber Performance	CB	1200	48	1.28	1.68	1257	2,772	90	●	●	
	CB	600	24	0.51	0.66	832	1,835	90	●	●	
	CB	900	36	0.88	1.16	1062	2,341	90	●	●	
	CB	1050	42	1.08	1.42	1170	2,580	90	●	●	
Ditch Cleaning	A	1150	45	0.60	0.78	292	644	100			X
	A	1200	48	0.57	0.74	388	855	100			X
	A	1500	60	0.74	0.97	455	1,003	100			X
General Duty	A	900	36	0.53	0.69	394	869	100			X
	Maximum load with coupler (payload + bucket)								kg	3609	4079
								lb	7,956	8,992	1,342

The above loads are in compliance with hydraulic excavator standard EN474-5:2006+A3:2013, they do not exceed 87% of hydraulic lifting capacity or 75% of tipping capacity with front linkage fully extended at ground line with bucket curled.

Capacity based on ISO 7451:2007.

Bucket weight with General Duty tips.

Maximum Material Density:

- 2100 kg/m³ (3,500 lb/yd³)
- ⊙ 1800 kg/m³ (3,000 lb/yd³)
- ⊖ 1500 kg/m³ (2,500 lb/yd³)
- 1200 kg/m³ (2,000 lb/yd³)
- X Not Recommended

Caterpillar recommends using appropriate work tools to maximize the value customers receive from our products. Use of work tools, including buckets, which are outside of Caterpillar's recommendations or specifications for weight, dimensions, flows, pressures, etc. may result in less-than-optimal performance, including but not limited to reductions in production, stability, reliability, and component durability. Improper use of a work tool resulting in sweeping, prying, twisting and/or catching of heavy loads will reduce the life of the boom and stick.

330 Hydraulic Excavator Specifications

Thumb Specifications

Not all Attachments are available in all regions. Consult your Cat dealer for configurations available in your region.

Match

No Match

Bucket Type	Tooth Quantity	Width		Pro Plus		Pro		Still Link		Utility	
		mm	in	Pin-On	Cat Pin Grabber	Pin-On	Cat Pin Grabber	Pin-On	Cat Pin Grabber	Pin-On	Cat Pin Grabber
General Duty	5	902	36	✓	✓	✓	✓	✓	✓	✓	✓
	5	1056	42	✓	✓	✓	✓	✓	✓	✓	✓
	6	1208	48	✓	✓	✓	✓	✓	✓	✓	✓
	7	1350	54	✓	✓	✓	✓	✓	✓	✓	✓
Heavy Duty	4	902	36	✓	✓	✓	✓	✓	✓	✓	✓
	5	1056	42	✓	✓	✓	✓	✓	✓	✓	✓
	5	1208	48	✓	✓	✓	✓	✓	✓	✓	✓
	6	1350	54	✓	✓	✓	✓	✓	✓	✓	✓
	7	1500	60	✓	✓	✓	✓	✓	✓	✓	✓
	7	1650	66	✓	✓	✓	✓	✓	✓	✓	✓
Heavy Duty Power	5	1080	42		✓		✓	✓	✓	✓	✓
	5	1232	48	✓	✓	✓	✓	✓	✓	✓	✓
	6	1384	54	✓	✓			✓	✓	✓	✓
Severe Duty	4	902	36	✓	✓	✓	✓	✓	✓	✓	✓
	5	1056	42	✓	✓	✓	✓	✓	✓	✓	✓
	5	1208	48	✓	✓	✓	✓	✓	✓	✓	✓
Pin Grabber Performance (HD)	5	1208	48		✓		✓			✓	✓
	6	1350	54		✓		✓			✓	✓
	7	1500	60							✓	✓
Pin Grabber Performance (SD)	4	902	36							✓	✓
	5	1056	42		✓					✓	✓

330 Hydraulic Excavator Specifications

Attachments Offering Guide

Not all Attachments are available in all regions. Consult your Cat dealer for configurations available in your region.

Match
 * Working range front only
 No Match
 1800 kg/m³ (3,000 lb/yd³)
 1200 kg/m³ (2,000 lb/yd³)

PIN-ON ATTACHMENTS

Undercarriage		L	
Counterweight		6.7 mt (14,770 lb)	
Boom Type		Reach	Reach
Stick Length		3.2 m (10'6")	3.75 m (12'4")
Hydraulic Hammers	H120 S	✓	✓
	H130 GC	✓	✓
	H130 GC S	✓	✓
	H130 S	✓	✓
	H140 GC	✓	✓
	H140 GC S	✓	✓
	H140 S	✓	✓
	H160 GC	✓	✓
	H160 GC S	✓	✓
Multi-Processors	MP324 Concrete Cutter Jaw	✓	✓
	MP324 Demolition Jaw	✓	✓
	MP324 Pulverizer Jaw	✓	✓
	MP324 Shear Jaw	✓	✓
	MP324 Tank Shear Jaw	✓	✓
	MP324 Universal Jaw	✓	✓
	MP332 Concrete Cutter Jaw	✓	✓
	MP332 Demolition Jaw	✓	✓*
	MP332 Pulverizer Jaw	✓	✓*
	MP332 Shear Jaw	✓	✓
	MP332 Tank Shear Jaw	✓*	✓
MP332 Universal Jaw	✓	✓*	
Demolition and Sorting Grapples	G324	✓	✓
	G324 WH-1500	✓	✓
	G324 WH-1800	✓	✓
	G324 WH-2000	✓	✓
	G324 WH	✓	✓
	G332	✓	✓
	Mobile Scrap and Demolition Shears	S3025	✓
S3025 Flat Top		✓	✓
S3035		✓	✓
S3035 Flat Top		✓	✓
Pulverizers	P225	✓	✓
Compactors (Vibratory Plate)	CVP110	✓	✓
Orange Peel Grapples	GSH425-750	●	●
	GSH425-950	●	●
	GSH425-1150	●	●
	GSH440-1150	●	○
	GSH440-1550	○	
	GSH525-750	●	●
	GSH525-950	●	●
GSH525-1150	●	○	

(continued on next page)

330 Hydraulic Excavator Specifications

Attachments Offering Guide *(continued)*

Not all Attachments are available in all regions. Consult your Cat dealer for configurations available in your region.

Match
 * Working range front only
 † Allowed usage on machine less than 50%
 No Match

CAT PIN GRABBER COUPLER ATTACHMENTS

Undercarriage		L	
Counterweight		6.7 mt (14,770 lb)	
Boom Type		Reach	Reach
Stick Length		3.2 m (10'6")	3.75 m (12'4")
Hydraulic Hammers	H120 S	✓	✓
	H130 GC	✓	✓
	H130 GC S	✓	✓
	H130 S	✓	✓
	H140 GC	✓	✓
	H140 GC S	✓	
	H140 S	✓	✓
	H160 GC	✓	
	H160 GC S	✓	✓
Multi-Processors	MP324 Concrete Cutter Jaw	✓	✓
	MP324 Demolition Jaw	✓	✓
	MP324 Pulverizer Jaw	✓	✓
	MP324 Shear Jaw	✓	✓
	MP324 Tank Shear Jaw	✓	✓
	MP324 Universal Jaw	✓	✓
	MP332 Concrete Cutter Jaw	✓*	
	MP332 Shear Jaw	✓*	
Demolition and Sorting Grapples	G324	✓†	✓
	G324 WH-1500	✓†	✓
	G324 WH-1800	✓†	
	G324 WH	✓†	✓
	G332	✓†	
Mobile Scrap and Demolition Shears	S3025	✓	✓
	S3025 Flat Top	✓	✓
	S3035	✓	
Pulverizers	P225	✓	✓
Compactors (Vibratory Plate)	CVP110	✓	✓

330 Hydraulic Excavator Specifications

Attachments Offering Guide *(continued)*

Not all Attachments are available in all regions. Consult your Cat dealer for configurations available in your region.

Match

TRS23-S70 ATTACHMENTS

Undercarriage	L	
Counterweight	6.7 mt (14,770 lb)	
Boom Type	Reach	
Stick Length	3.2 m (10'6")	
Hydraulic Hammers	H120 S	✓
	H130 S	✓
Compactors (Vibratory Plate)	CVP110	✓

TRS23-S80 ATTACHMENTS

Undercarriage	L	
Counterweight	6.7 mt (14,770 lb)	
Boom Type	Reach	
Stick Length	3.2 m (10'6")	
Hydraulic Hammers	H120 S	✓
	H130 GC S	✓
	H130 S	✓
Compactors (Vibratory Plate)	CVP110	✓

BOOM-MOUNT ATTACHMENTS

Undercarriage	L	
Counterweight	6.7 mt (14,770 lb)	
Boom Type	Reach	
Mobile Scrap and Demolition Shears	S2070	✓
	S3050	✓

330 Standard and Optional Equipment

Standard and Optional Equipment

Standard and optional equipment may vary. Consult your Cat dealer for details.

	Standard	Optional		Standard	Optional
CAB			CAT TECHNOLOGY		
ROPS, standard sound suppression	✓		Cat Product Link™	✓	
High-resolution 254 mm (10") LCD touchscreen monitor	✓		Work tool recognition	✓	
High-resolution 254 mm (10") LCD touchscreen monitor + additional monitor (only for use with Cat Grade with Advanced 2D or Cat Grade with 3D)		✓	Work tool tracking*	✓	
Automatic bi-level air conditioner	✓		Laser catcher		✓
Jog dial and shortcut keys for monitor control	✓		Cat Grade with 2D and offset memory	✓	
Keyless push-to-start engine control	✓		Cat Grade with Advanced 2D		✓
Height-adjustable infinite, with no tool	✓		Cat Grade with 3D connectivity: – Virtual Reference Station** – Internet Base Service Station** – Trimble Connected Community**		✓
Tilt-up left-side console	✓		Cat Assist:	✓	
Heated seat with air-adjustable suspension	✓		– Grade Assist		
51 mm (2") orange seat belt	✓		– Boom Assist		
Bluetooth® integrated radio (including USB, aux port and microphone)	✓		– Bucket Assist		
12V DC outlets	✓		– Swing Assist		
Document storage	✓		– Lift Assist		
Rear head storage net & lunchbox storage net	✓		Cat Payload:	✓	
Cup and bottle holders	✓		– Static weigh		
Openable two-piece front window	✓		– Semiautomatic calibration		
Upper radial wiper with washer	✓		– Payload/cycle information		
Openable polycarbonate skylight hatch	✓		– USB reporting capability		
LED dome light	✓		2D E-Fence:	✓	
Floor welcome light	✓		– E-ceiling		
Roller front sunscreen	✓		– E-floor		
Roller rear sunscreen		✓	– E-swing		
Rear window emergency exit	✓		– E-wall		
Washable floor mat	✓		– E-cab avoidance		
Beacon ready	✓		Auto hammer stop	✓	
			Remote Services capability	✓	
			Auto Dig Boost	✓	

*Paired with PL161 attachment locator.

**Subscription required.

(continued on next page)

Standard and Optional Equipment *(continued)*

Standard and optional equipment may vary. Consult your Cat dealer for details.

	Standard	Optional		Standard	Optional
ENGINE			BOOMS, STICKS AND LINKAGES		
Three selectable modes: Power, Smart, Eco	✓		6.15 m (20'2") Reach boom		✓
Automatic engine speed control	✓		10.2 m (33'6") Super Long Reach boom		✓
Automatic engine idle-shutdown	✓		3.2 m (10'6") Reach stick, CB2 Linkage		✓
4500 m (14,760 ft) altitude capability with engine power derate above 3000 m (9,840 ft)	✓		3.75 m (12'4") Reach stick, CB2 Linkage		✓
52° C (125° F) high-ambient cooling capability with derate	✓		7.85 m (25'9") Super Long Reach stick, A linkage		✓
-18° C (0° F) cold start capability	✓		Bucket linkage, CB2 family with lifting eye, Cat Grade		✓
-32° C (-25° F) cold start capability		✓	Bucket linkage, A family with lifting eye		✓
Cold start block heaters		✓	UNDERCARRIAGE AND STRUCTURES		
2 × 115 amp dual alternator	✓		Full-length track guiding guards		✓
Sealed double element air filter with integrated precleaner	✓		Segmented track guiding guards	✓	
Two-stage fuel filtration with water separator and indicator	✓		Swivel guard	✓	
Electric fuel priming pump	✓		HD bottom guard	✓	
Electric cooling fans with auto-reverse function	✓		HD travel motor guard	✓	
Biodiesel capability up to B20	✓		Grease lubricated track	✓	
HYDRAULIC SYSTEM			Swing drive and motor, and swing bearing for higher swing torque	✓	
Electronic main control valve	✓		Base frame with HD rollers	✓	
Electric boom regeneration circuit	✓		Tie-down points on base frame	✓	
Stick regeneration circuit	✓		6700 kg (14,770 lb) counterweight	✓	
Automatic hydraulic oil warm up	✓		600 mm (24") single grouser track shoes		✓
Automatic two-speed travel	✓		700 mm (28") HD triple grouser track shoes		✓
Boom and stick drift reduction valve	✓		800 mm (31") triple grouser track shoes		✓
Boom lowering check valve		✓	<i>(continued on next page)</i>		
Stick lowering check valve		✓			
Heavy lift mode	✓				
High performance hydraulic return filter	✓				
Final drive with bio hydraulic oil capable travel motor	✓				
Fine swing control	✓				
Advanced Tool Control (two pump, one/two way high-pressure flow)		✓			
Medium-pressure circuit		✓			
Common Quick Coupler Circuit for Cat Pin Grabber and CW Dedicated		✓			
Electronic Pattern Changer (requires activation)	✓				

330 Standard and Optional Equipment

Standard and Optional Equipment *(continued)*

Standard and optional equipment may vary. Consult your Cat dealer for details.

	Standard	Optional		Standard	Optional
ELECTRICAL SYSTEM			SAFETY AND SECURITY		
Maintenance-free 1,000 CCA batteries (×2)	✓		Cat Command remote control		✓
Programmable time-delay LED working lights	✓		Rearview and right-hand-sideview cameras	✓	
Centralized electrical disconnect switch	✓		360° visibility		✓
LED chassis light, LH and RH boom lights, cab lights	✓		Secure start with PIN code	✓	
Premium surround lighting package		✓	Caterpillar One Key security system	✓	
SERVICE AND MAINTENANCE			Lockable external tool/storage box	✓	
Grouped location of engine oil and fuel filters	✓		Lockable door, fuel, and hydraulic tank locks	✓	
Ground-level second dipstick for engine oil	✓		Lockable fuel drain compartment	✓	
Side entry to service platform	✓		Service platform with anti-skid plate and recessed bolts	✓	
Scheduled Oil Sampling (S·O·S SM) ports	✓		RH handrail and hand hold (ISO 2867:2011 compliant)	✓	
QuickEvac TM maintenance ready	✓		Cab mirror for RH track edge	✓	
Radiator screen		✓	Signaling/warning horn	✓	
			Ground-level secondary engine shutoff switch in cab	✓	
			Hydraulic lock out lever that neutralizes all controls	✓	
			Travel alarm	✓	

Dealer Installed Kits and Attachments

Attachments may vary. Consult your Cat dealer for details.

CAB

- LH/RH electrical pedal (two-way) for tool control
- Dual exit rear window kit
- Radial lower wiper for two piece (70/30) windshield, with washer
- Rain protector plus cab light cover

SAFETY AND SECURITY

- 75 mm (3") retractable seat belt
- Bluetooth key fob

GUARDS

- Side rubber bumper guard
- Falling object guard system (not compatible with cab light cover, rain protector)
- Mesh guard full front (not compatible with cab light cover, rain protector)
- Mesh guard lower half front
- Full protecting vandalism guard (not compatible with cab light cover, rain protector)

ELECTRICAL

- Jump start wiring

SERVICE AND MAINTENANCE

- Grease gun holder

For more complete information on Cat products, dealer services, and industry solutions, visit us on the web at www.cat.com

© 2020 Caterpillar
All rights reserved

Materials and specifications are subject to change without notice. Featured machines in photos may include additional equipment. See your Cat dealer for available options.

CAT, CATERPILLAR, LET'S DO THE WORK, their respective logos, "Caterpillar Corporate Yellow," the "Power Edge" and Cat "Modern Hex" trade dress as well as corporate and product identity used herein, are trademarks of Caterpillar and may not be used without permission.

AEXJ0075-03 (09-2020)
Replaces AEXJ0075-02
Build Number: 07C
(North America)

