

# Pipe handling safety . Made simple.



Distributed Exclusively by:

**PipeLine  
Machinery**



**One world. One focus. One name.**

# DECKHAND™ by LaValley Industries

## Precision pipe handling – made simpler and safer

Moving large amounts of pipe under the time constraints of a major pipeline project or the precision requirements of directional drilling has, until now, required personnel to load or line up the pipe - putting them in harm's way. Not anymore.

Distributed exclusively by PLM, the DECKHAND Pipe Handling System by LaValley Industries accomplishes precise pipe handling and placement without requiring ground crew to work in the vicinity of moving pipe. The DECKHAND system consists of the main head which mounts to most excavators using a quick connect system. The excavator's hydraulics safely and efficiently power the DECKHAND. Interchangeable grab arms are used to pick up the pipe and hold it securely as it is lifted, lowered, rotated, tilted and moved.

When it comes to the safety of your employees and equipment, the DECKHAND Pipe Handling System can safely pick up and move pipe in inclement weather and snow and ice conditions. The grab arms can grip securely from an off-center position on the pipe allowing for more control in areas with tight accessibility. The DECKHAND system functions as well as the excavator in extreme temperatures because it is using the excavator's hydraulics and power. Pipe loading/off-loading is no longer a challenge in winter conditions.



Utility Arms - pickup off-center, snow covered

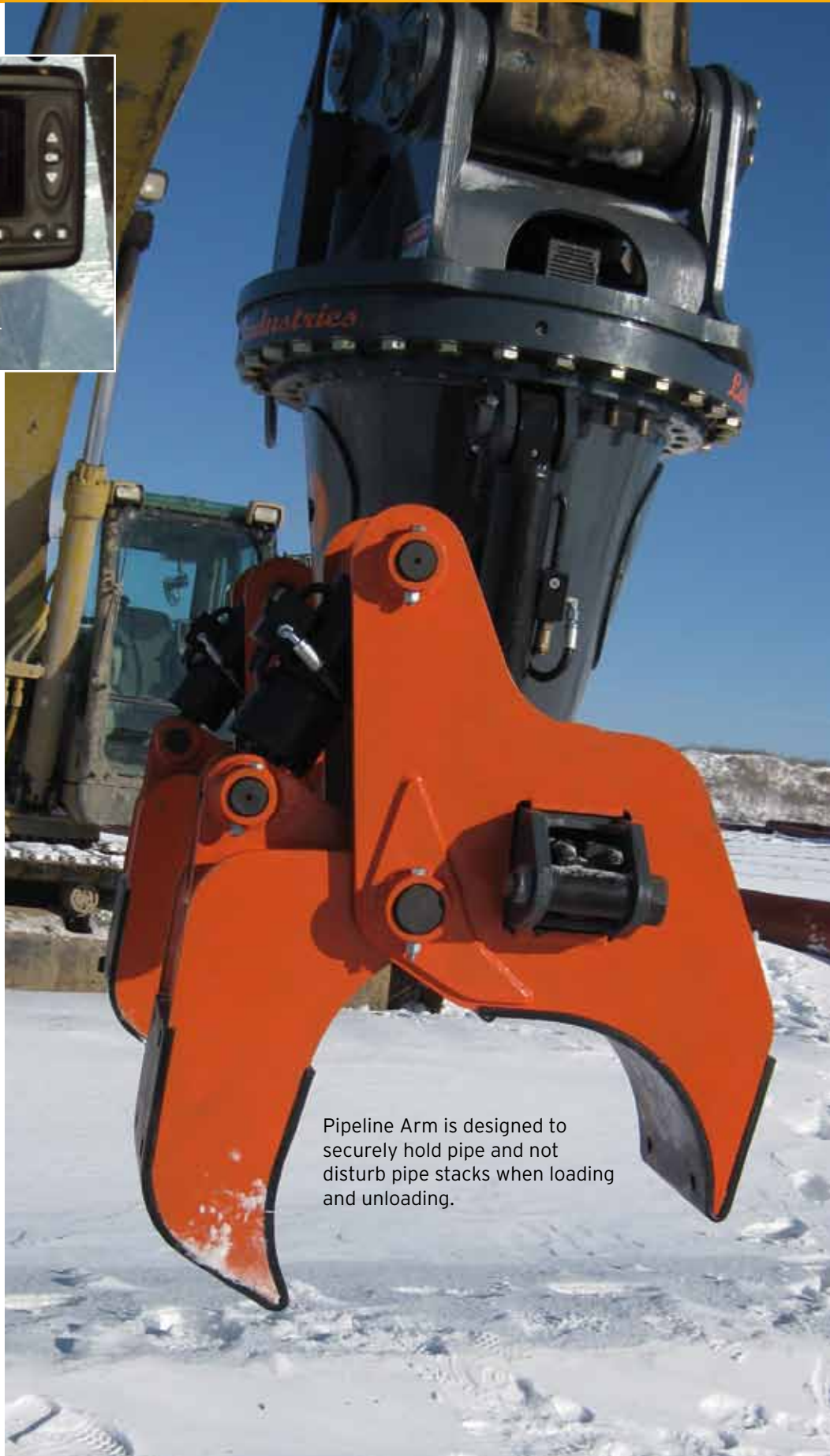
# Controlled 360 degrees rotation.



In cab monitor

## Engineered for simple control

- DECKHAND operator controls are easily incorporated in the excavator cab, utilizing existing power sources
- Quick connect systems for attaching the DECKHAND head to the excavator stick and quick coupling for hydraulic and electric connections
- Adaptable to various sized excavators with a simple adjustment of the attachment pins
- Pipe handling arms have replaceable pipe protection pads designed for long wear and easy replacement
- Load check valves on all grab arm cylinders keep the load secure even if a hydraulic hose fails
- Load sensors give the operator clear information on the grab arm grip status as the pipe is moved from point A to point B
- Display panel inside the cab allows the operator to monitor and adjust all functions, pressures and flows from inside the cab
- Shift function on the main beam allows pipe to be moved 5.5 inches from side to side.
- Tilt function provides the versatility to handle pipe in multiple working angles.
- Upper and lower head separation allows controlled, 360° rotation of the pipe load



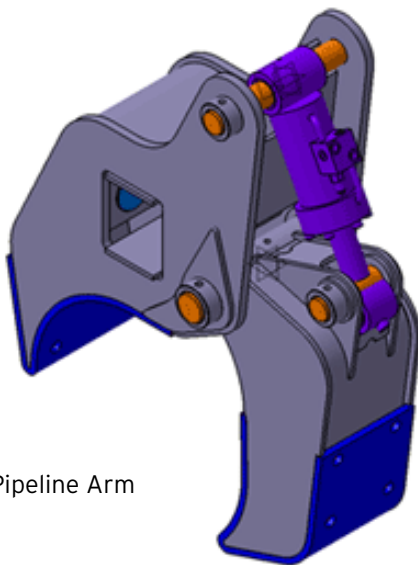
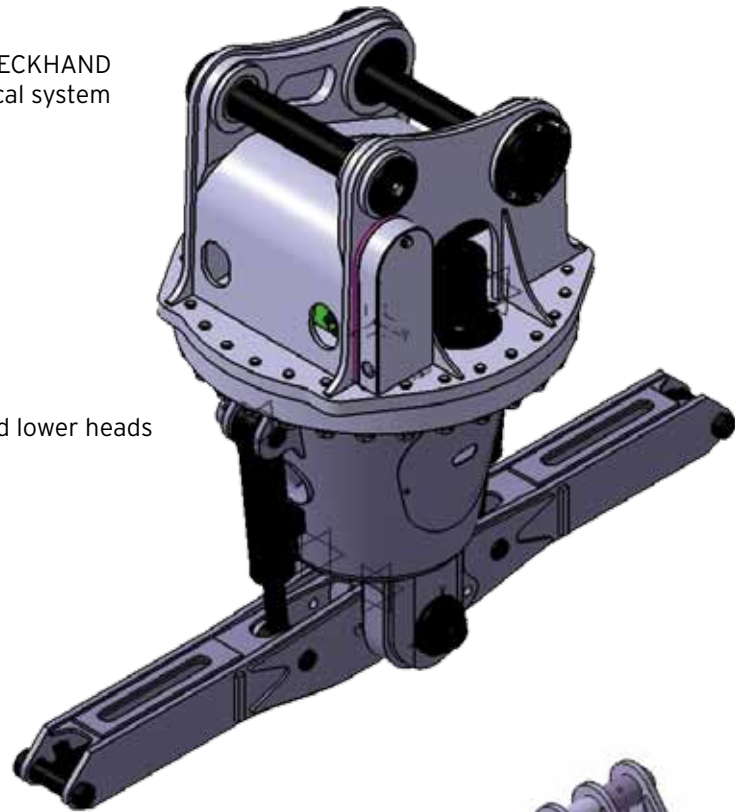
Pipeline Arm is designed to securely hold pipe and not disturb pipe stacks when loading and unloading.

# Installations

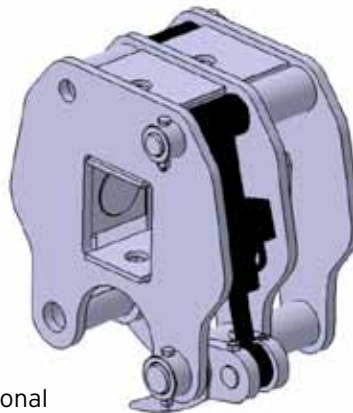
## Easy Installation

Different work tools are available to attach to the DECKHAND head. DECKHAND is powered by the 24-volt electrical system and the auxiliary hydraulic circuit on the excavator

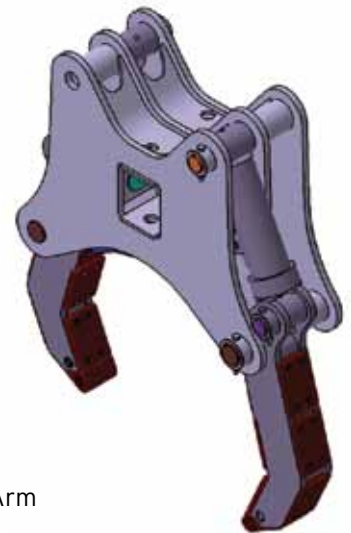
DECKHAND upper and lower heads with mounting beam



Pipeline Arm



Directional Drilling Arm



Utility Arm

**PipeLine  
Machinery**



**One world. One focus. One name.**

### **Distributed Exclusively by:**

PipeLine Machinery International  
13333 Northwest Freeway, Suite 500  
Houston, TX 77040 USA  
Phone: 1.713.939.0007  
Fax: 1.713.939.0009  
[WWW.PLMCAT.COM](http://WWW.PLMCAT.COM)

### **Manufactured and Serviced by:**

LaValley Industries.  
560 Center Point, CT  
Bemidji, MN  
USA 56601  
Phone: 1.218.444.3030  
[WWW.LAVALLEYINDUSTRIES.COM](http://WWW.LAVALLEYINDUSTRIES.COM)